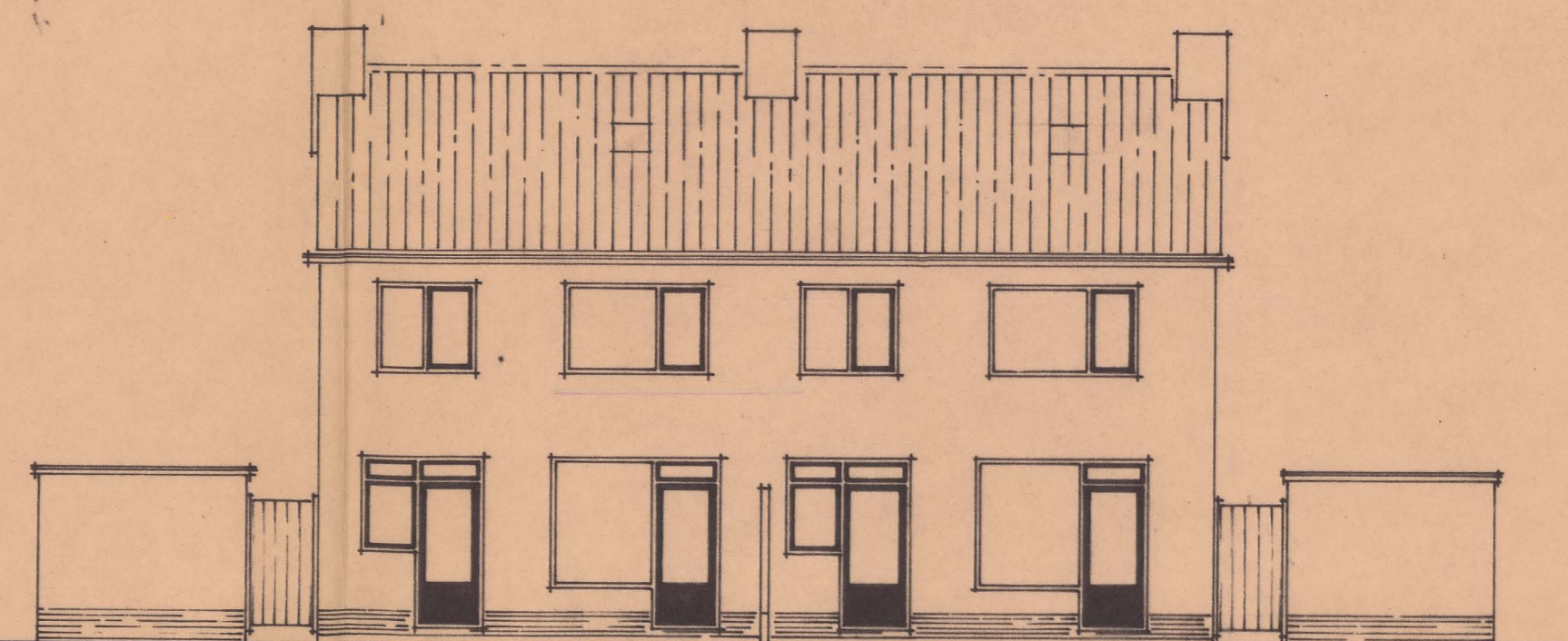
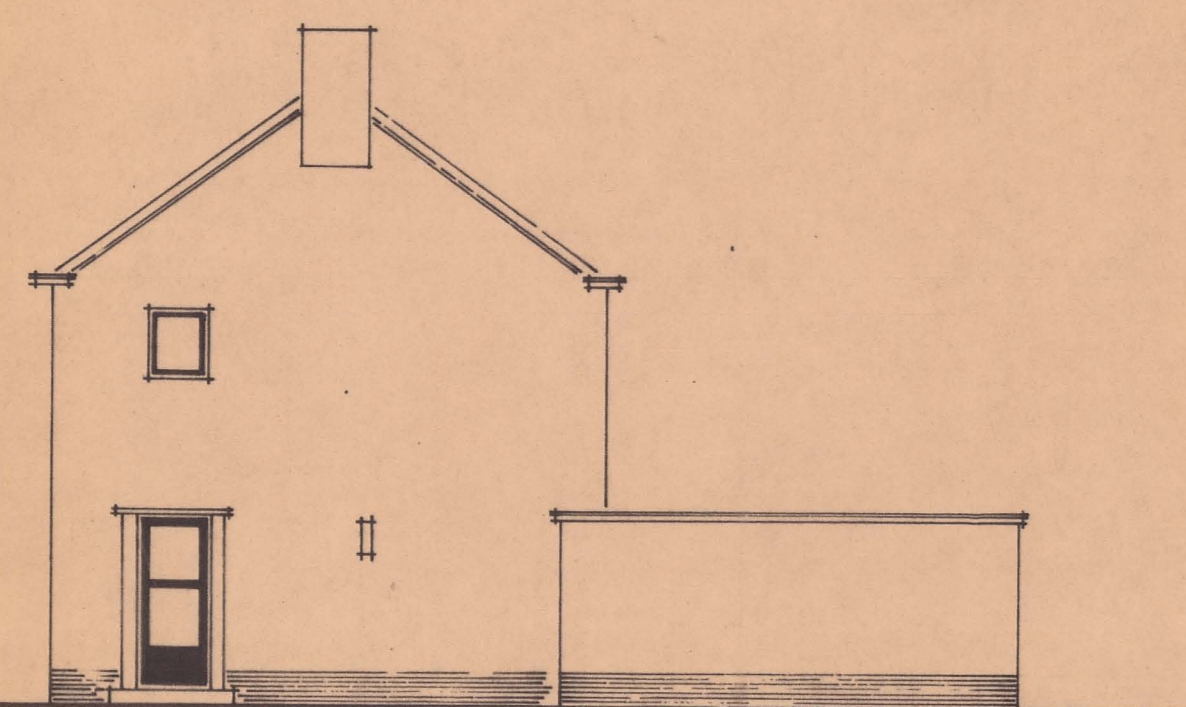


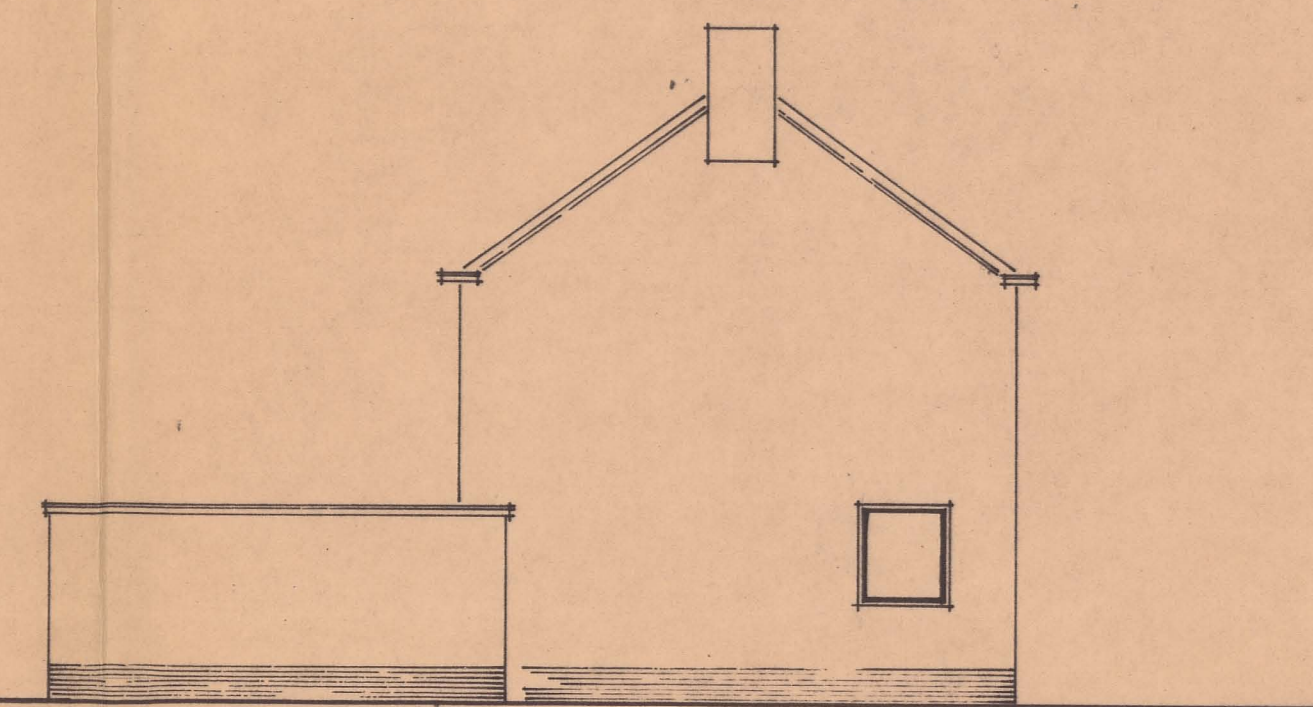
VOORGEVEL



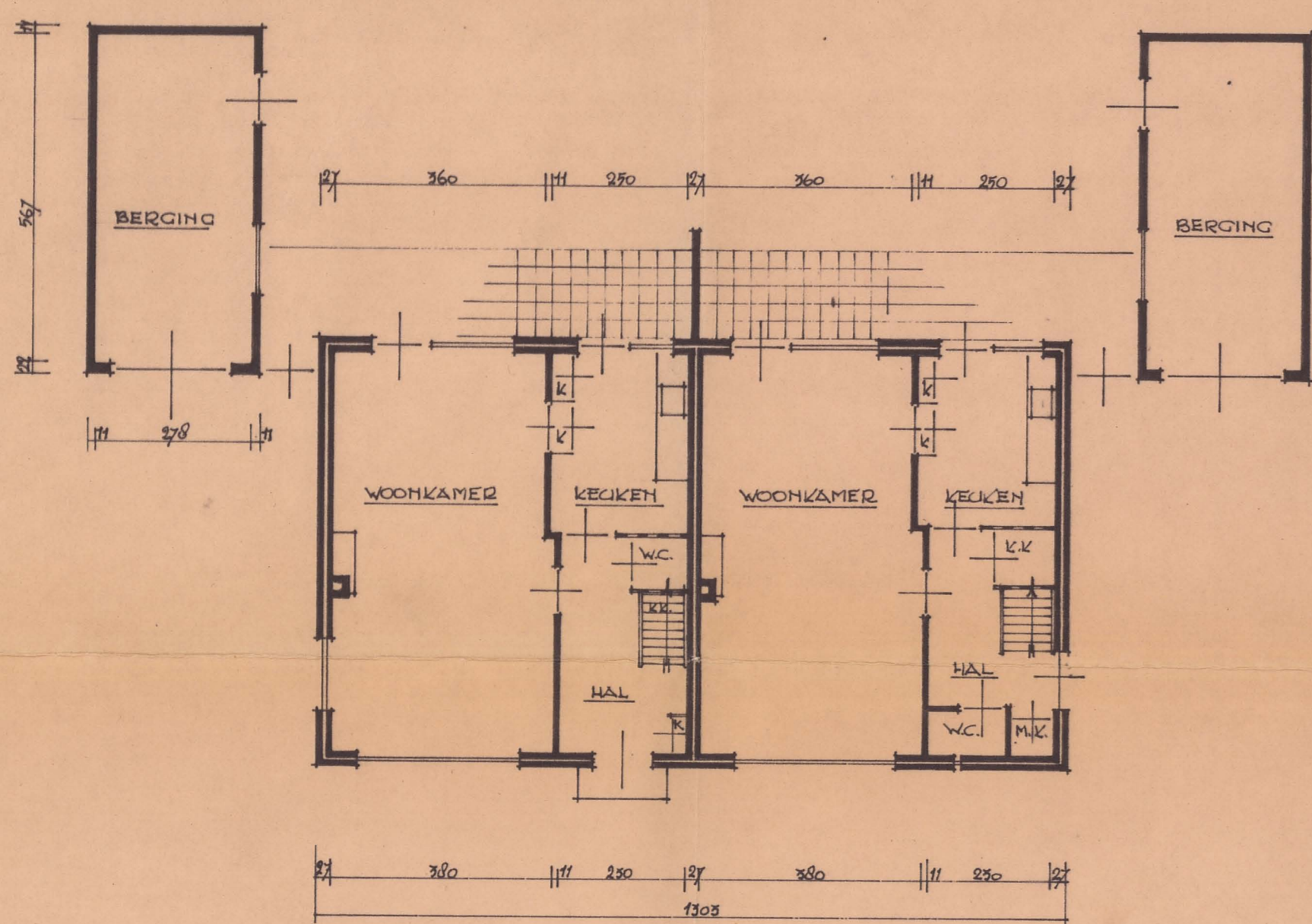
ACHTERGEVEL



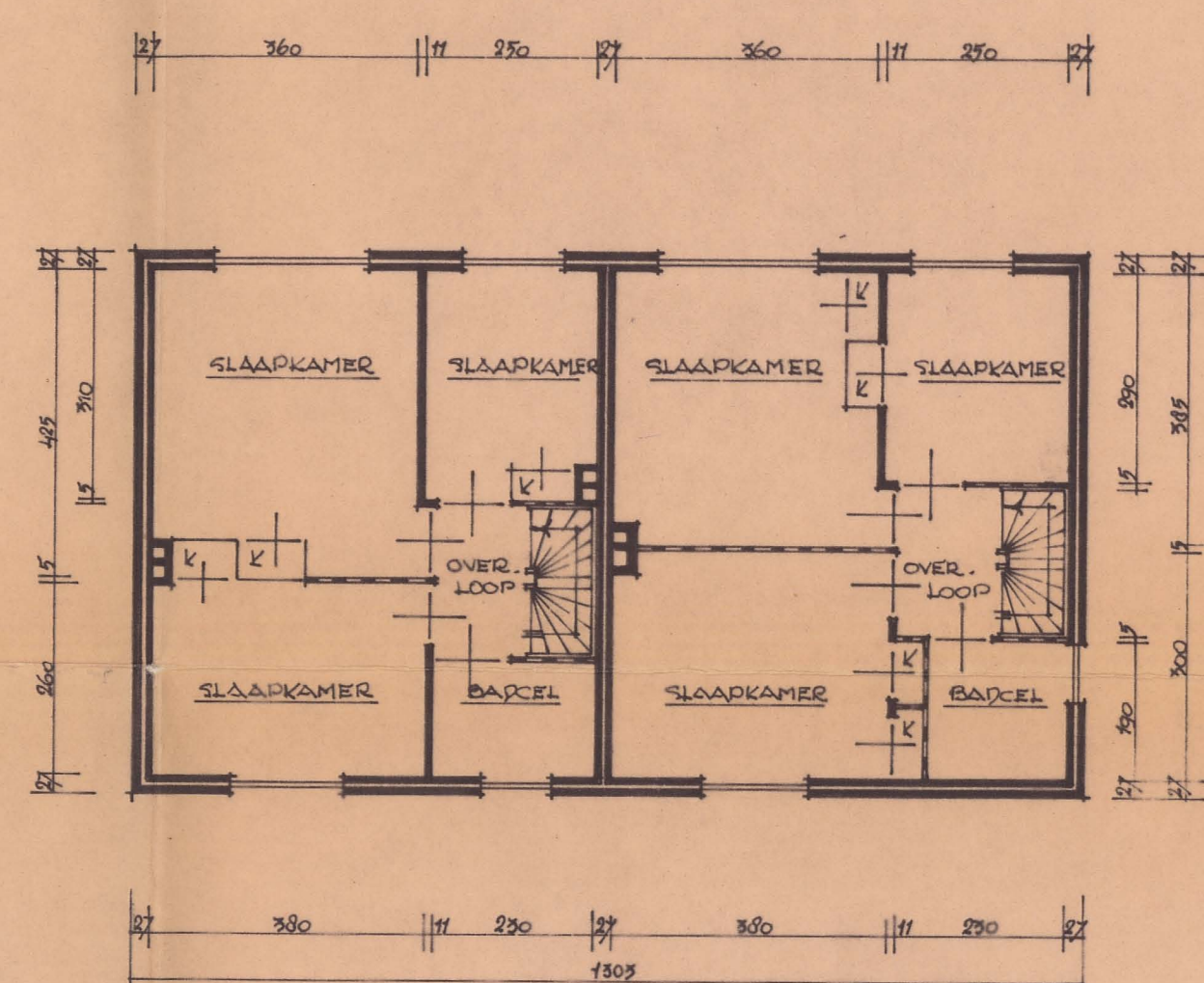
ZYGEVEL



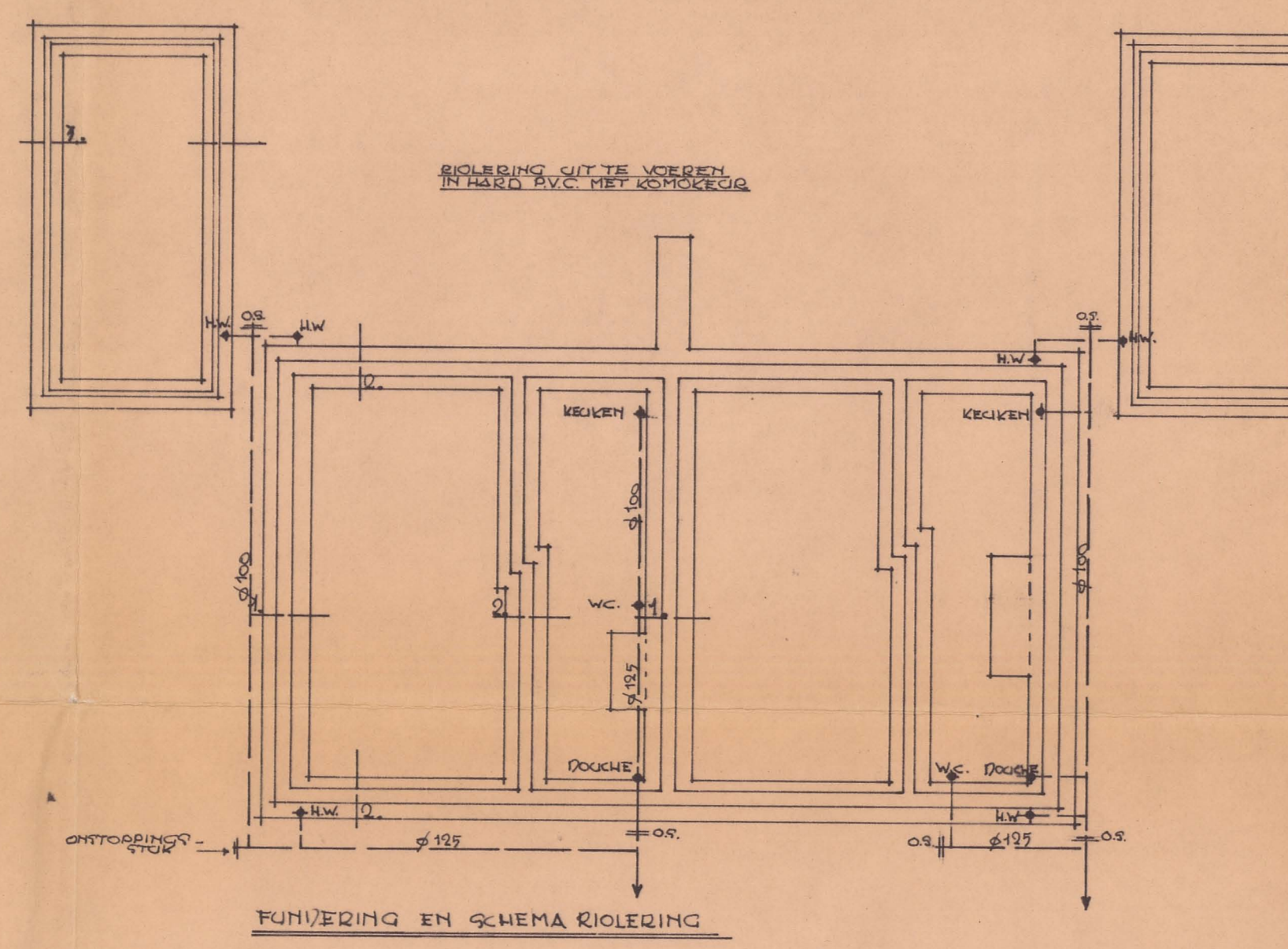
ZYGEVEL



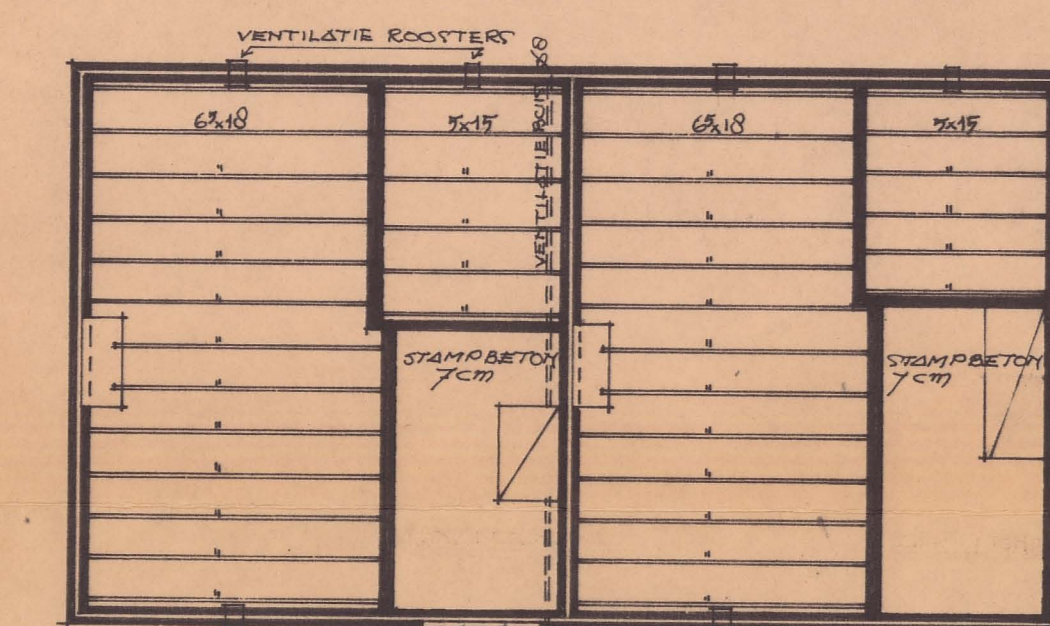
BEGANEGROND



VERDIEPING

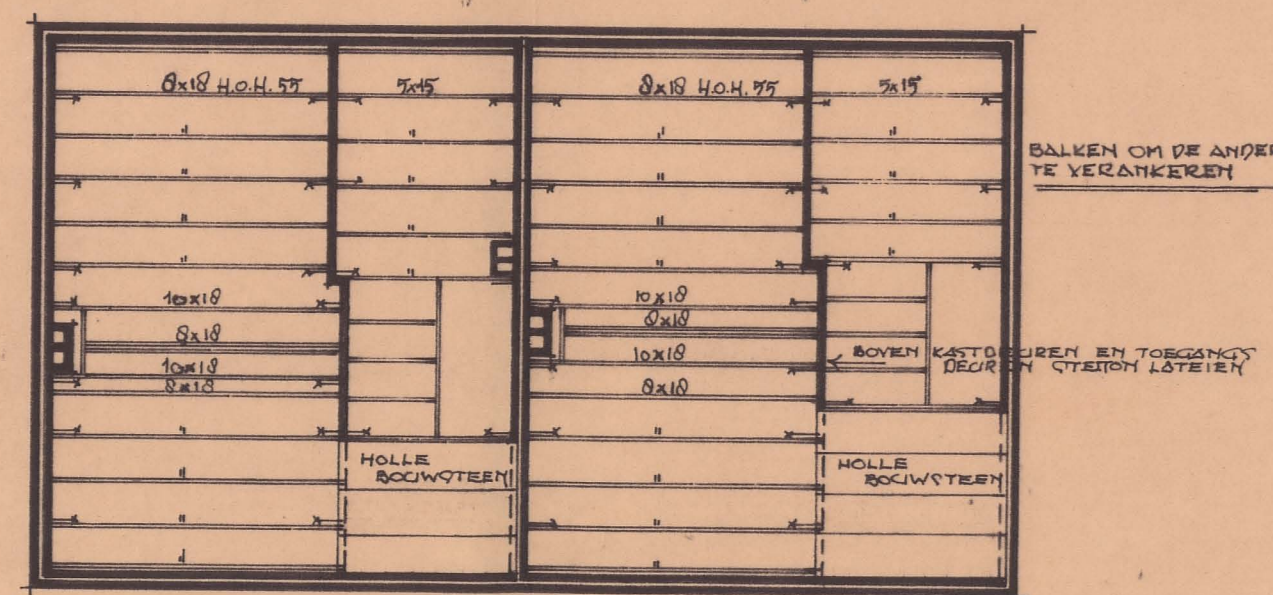


FUNDERING EN SCHEMA RIOLERING

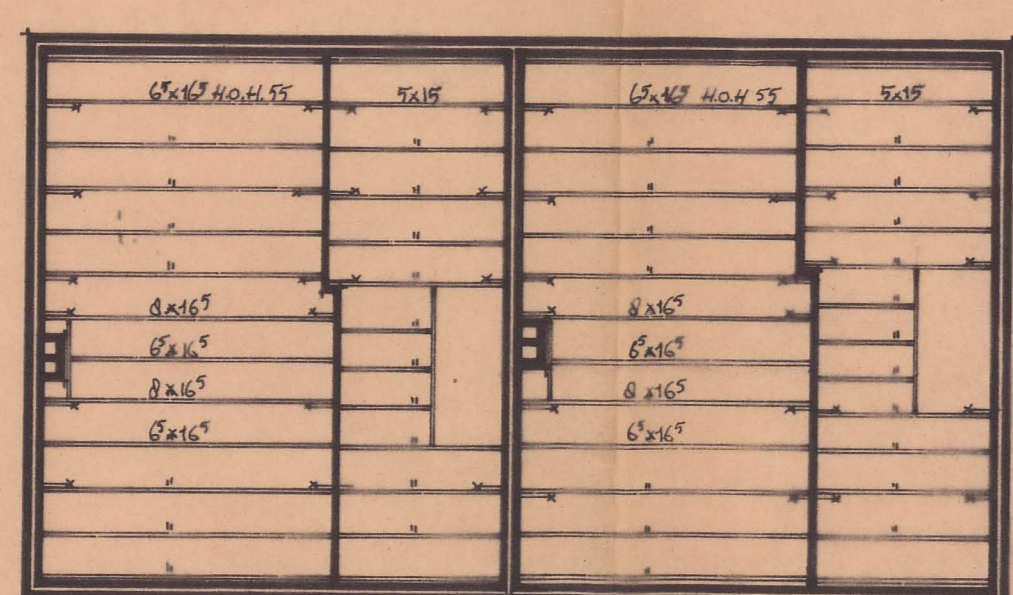


BEGANEGROND BALKLAAG

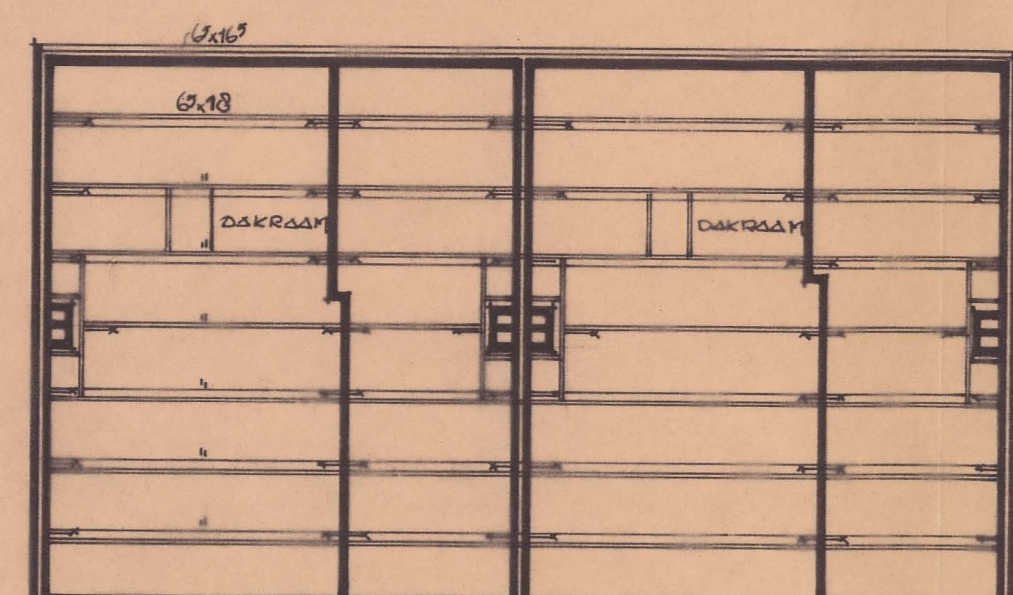
Behoort bij besluit van de Raad van Heemskerk B. en W. dd. 11 nov. 1965 no. 155 Mij bekend. De Secretaris van Heemskerk.



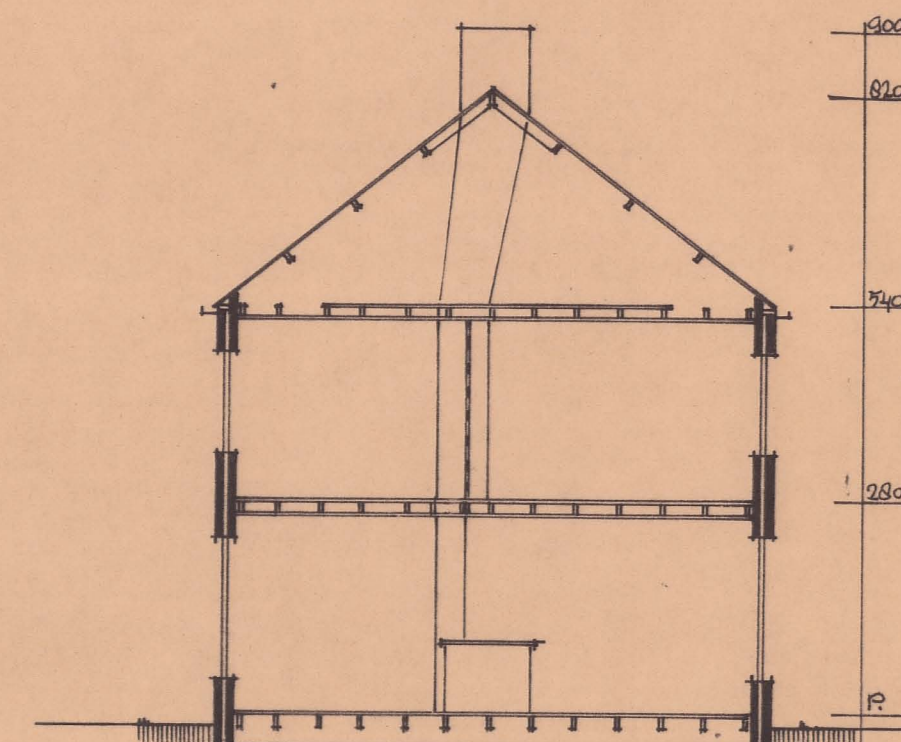
VERDIEPING BALKLAGEN



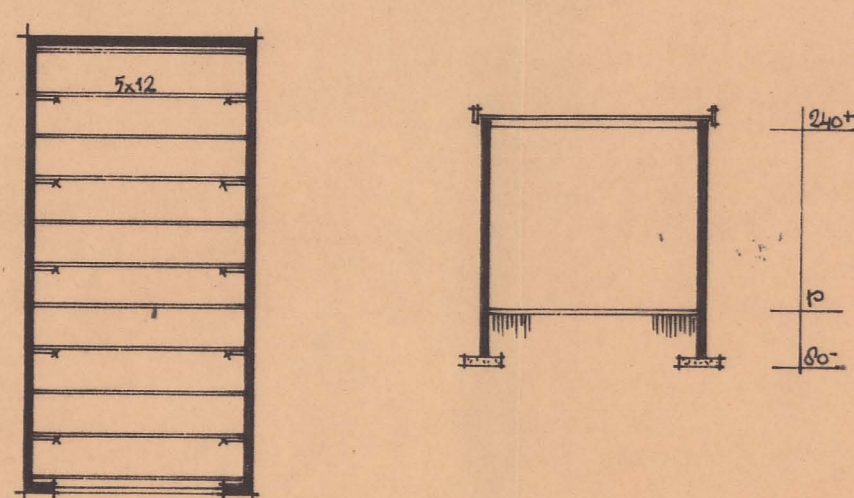
VLERING BALKLAGEN



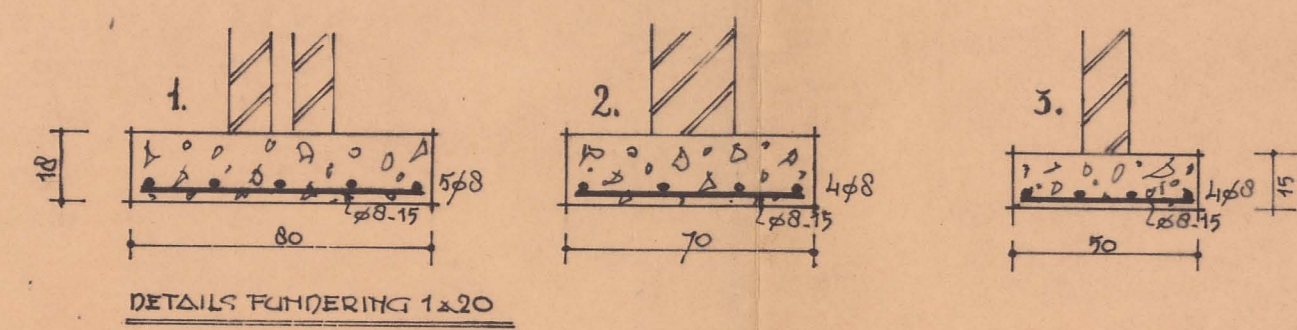
KAPPLAN



DOORSHERF

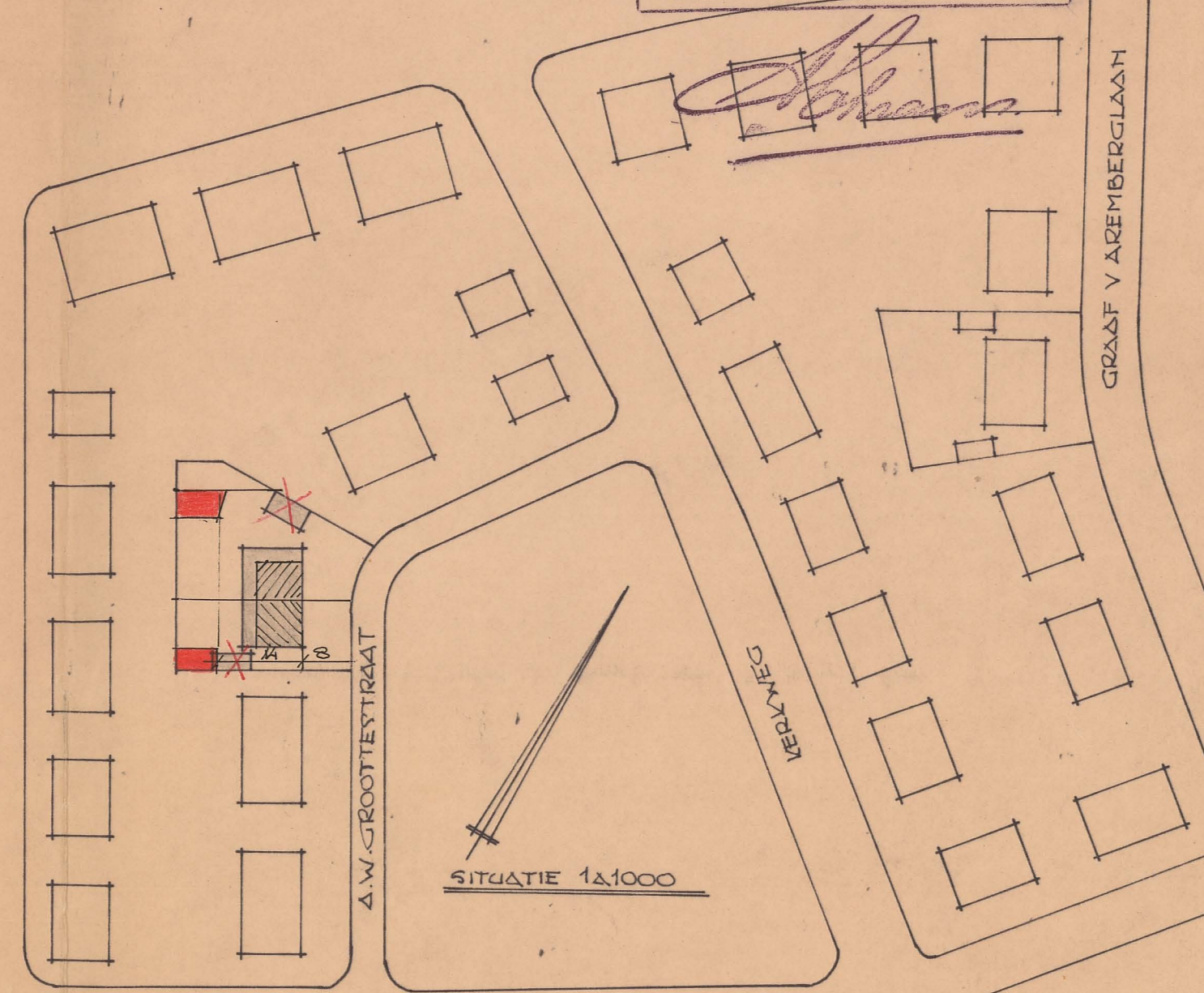


PLATDAK EN VOORHEDF BERGING



DETAILS FUNDERING 1:20

TE VERWERKEN MATERIALEN  
GEVELSTEEN: HANHOEVOM W.F. DEEL GEHAKKEERD  
TRAPRAAM: HANHOEVOM W.F. DENKER RAART  
DAKBEVEKING: OPH. VERS. HOLL. RAH. BLACW. GET.  
GOTEN: GEPR. MOD. 'BRUWZEEL' MET KLOSSEN  
VOORDEUREN: TEAKHOUTEN  
SCHILWERK: LICHTE KLEUREN



SITUATIE 1:1000

BOUWPLAN DUBBEL WOONHUIS AAN DE A.W. GROOTESTRAAT TE HEEMSKERK  
TEKENING SCHAAL 1:100  
H.V. DANHEMERS EN BOUWBEDRIJF LABORA  
GEELVINKSTRAAT 72 CASTRICUM