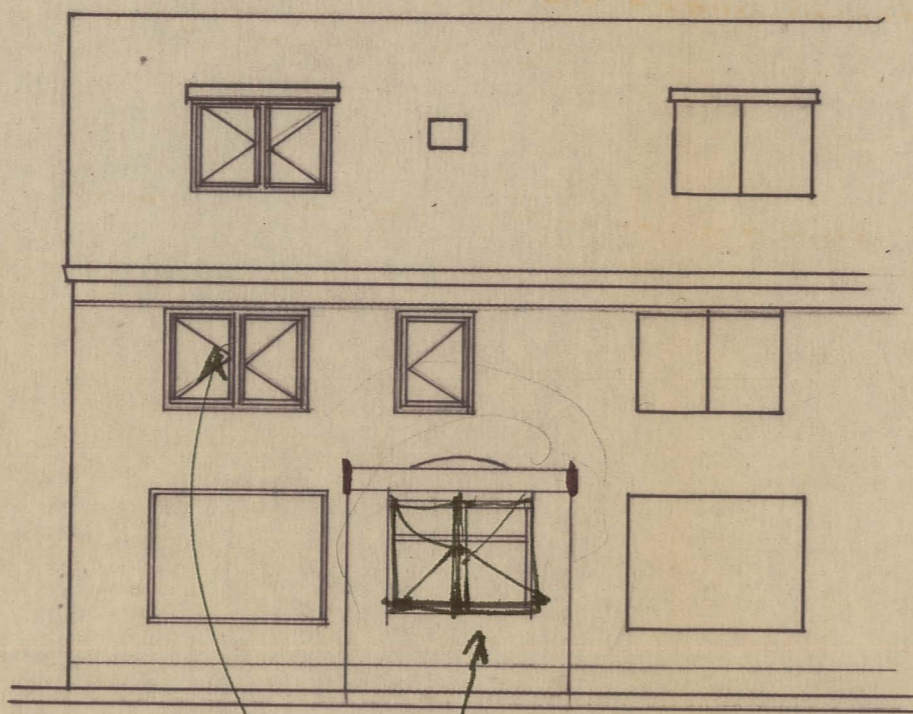
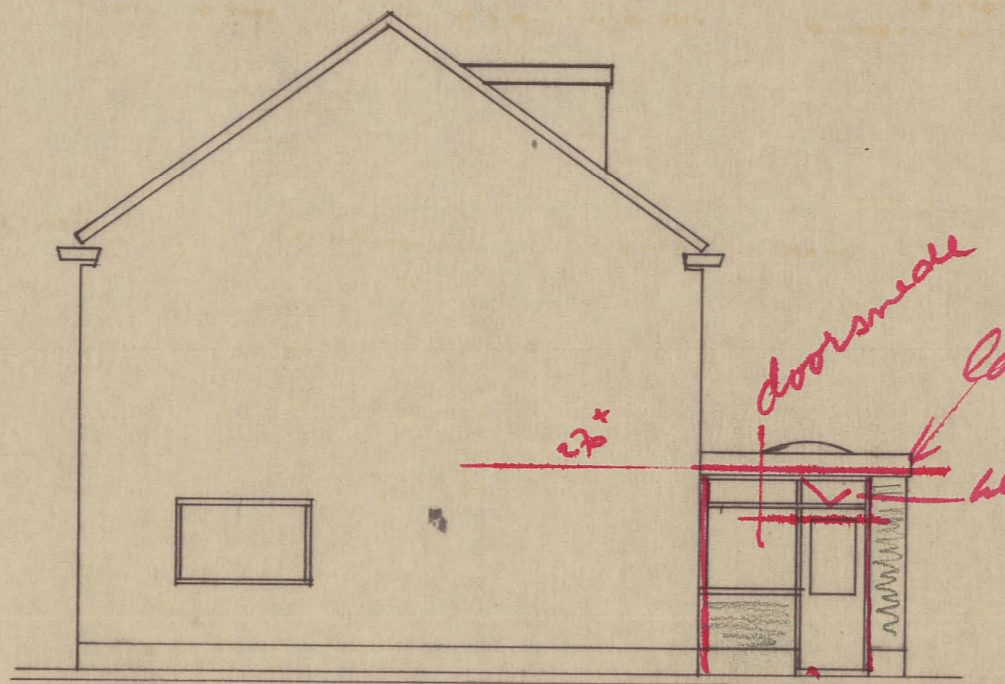


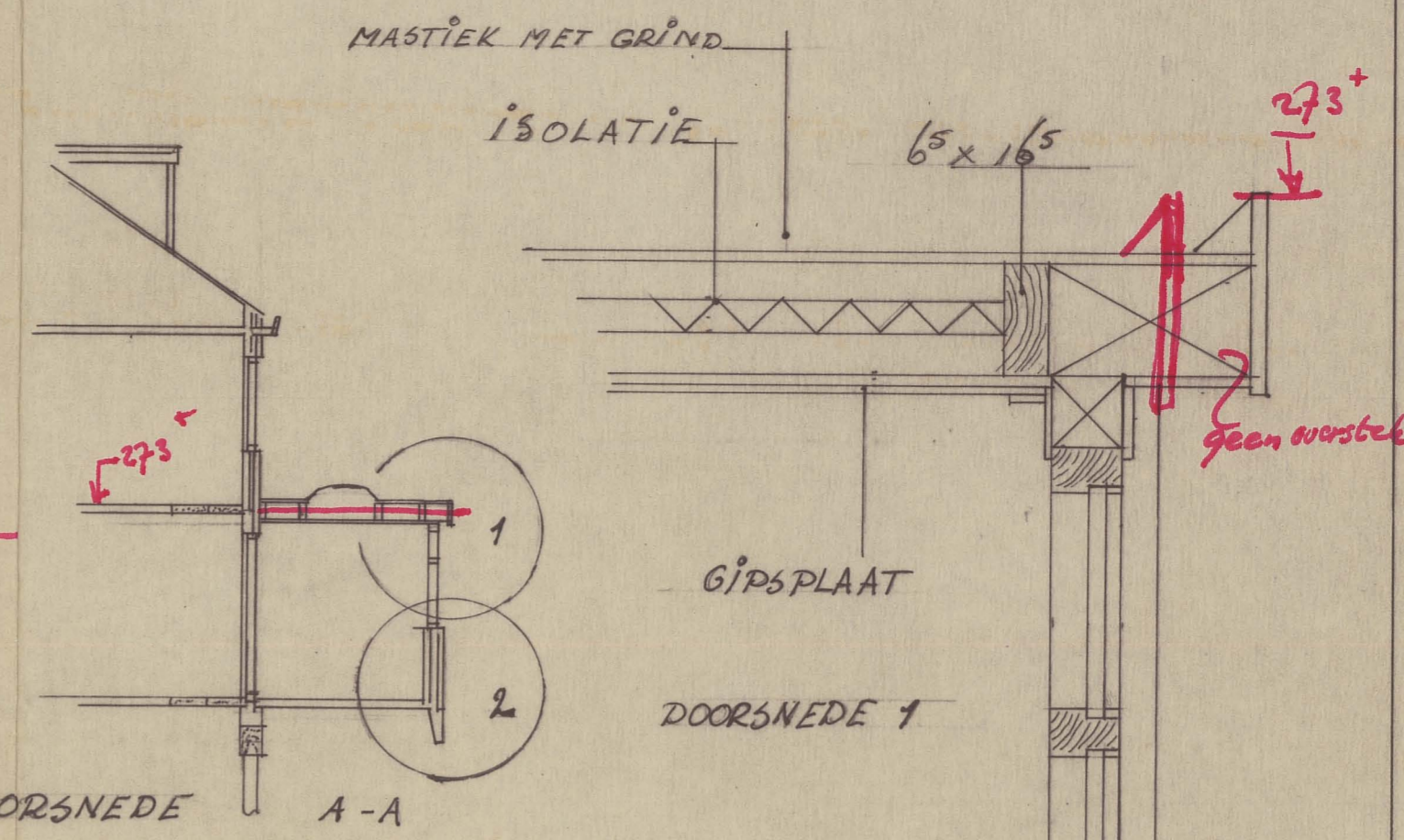
ACHTER AANZICHT BESTAAND.



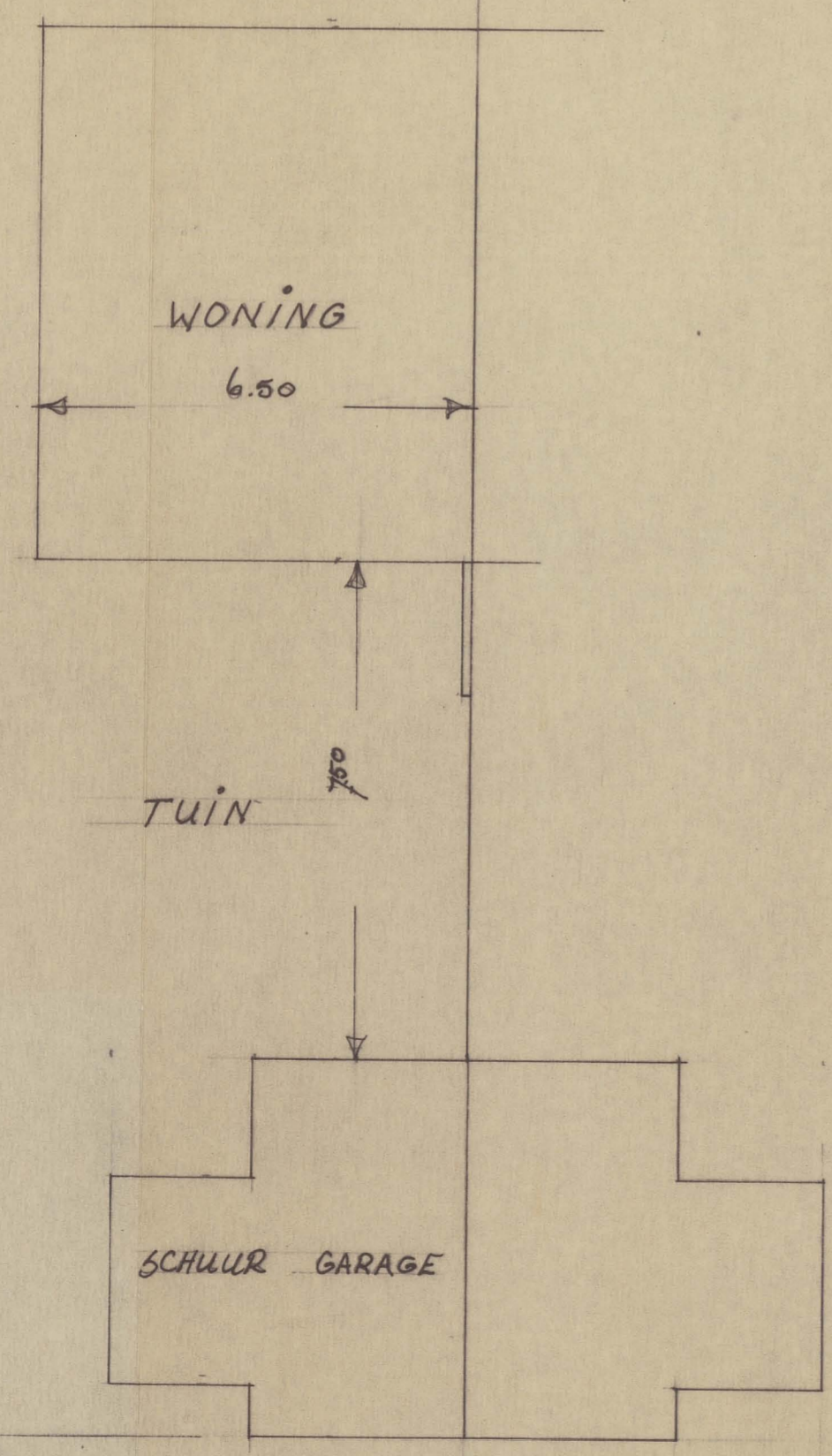
ACHTER AANZICHT GEWIJZIGD.  
dat raam geluiken  
bij de inbouw



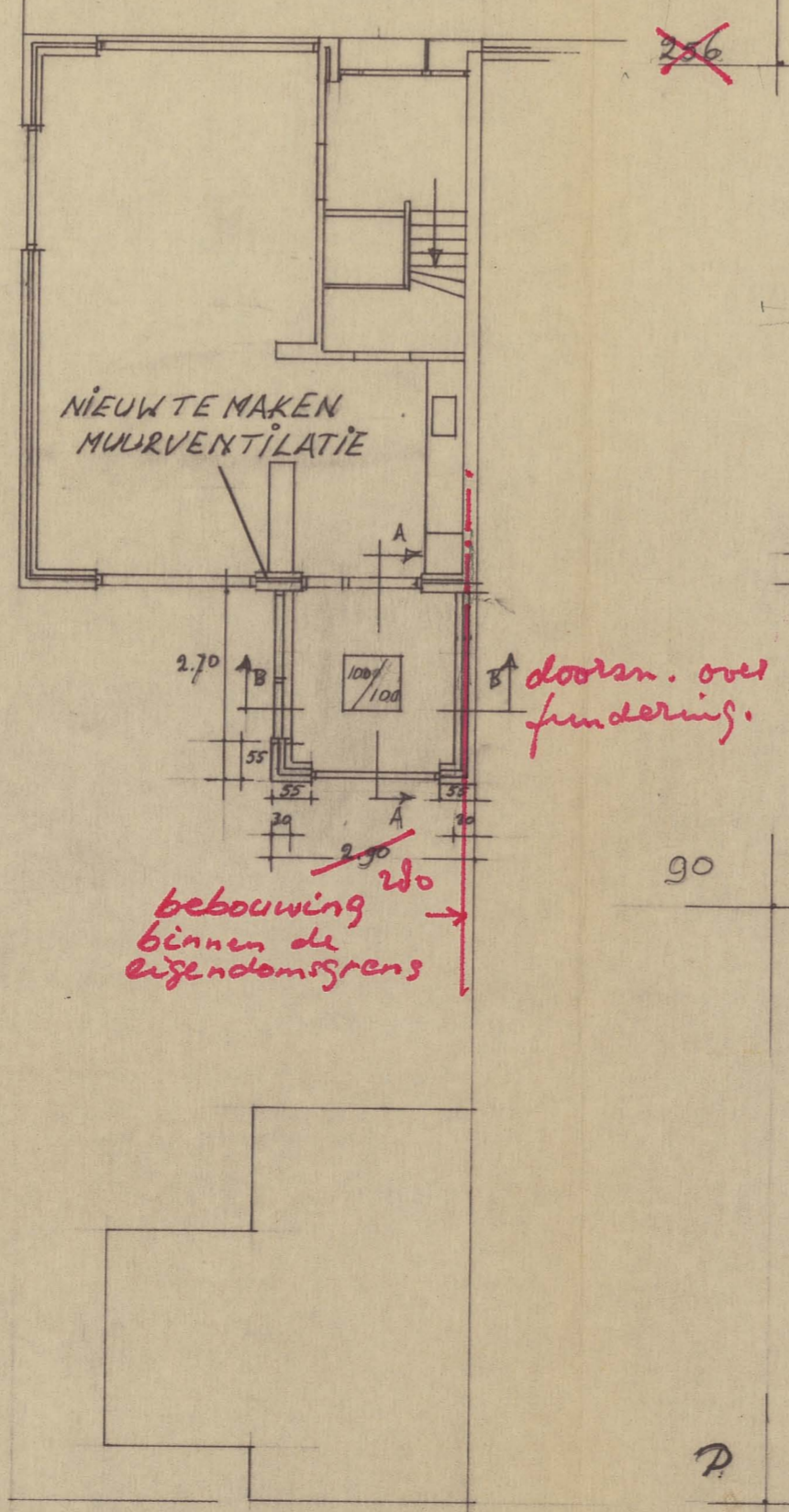
ZY AANZICHT NIEUW.



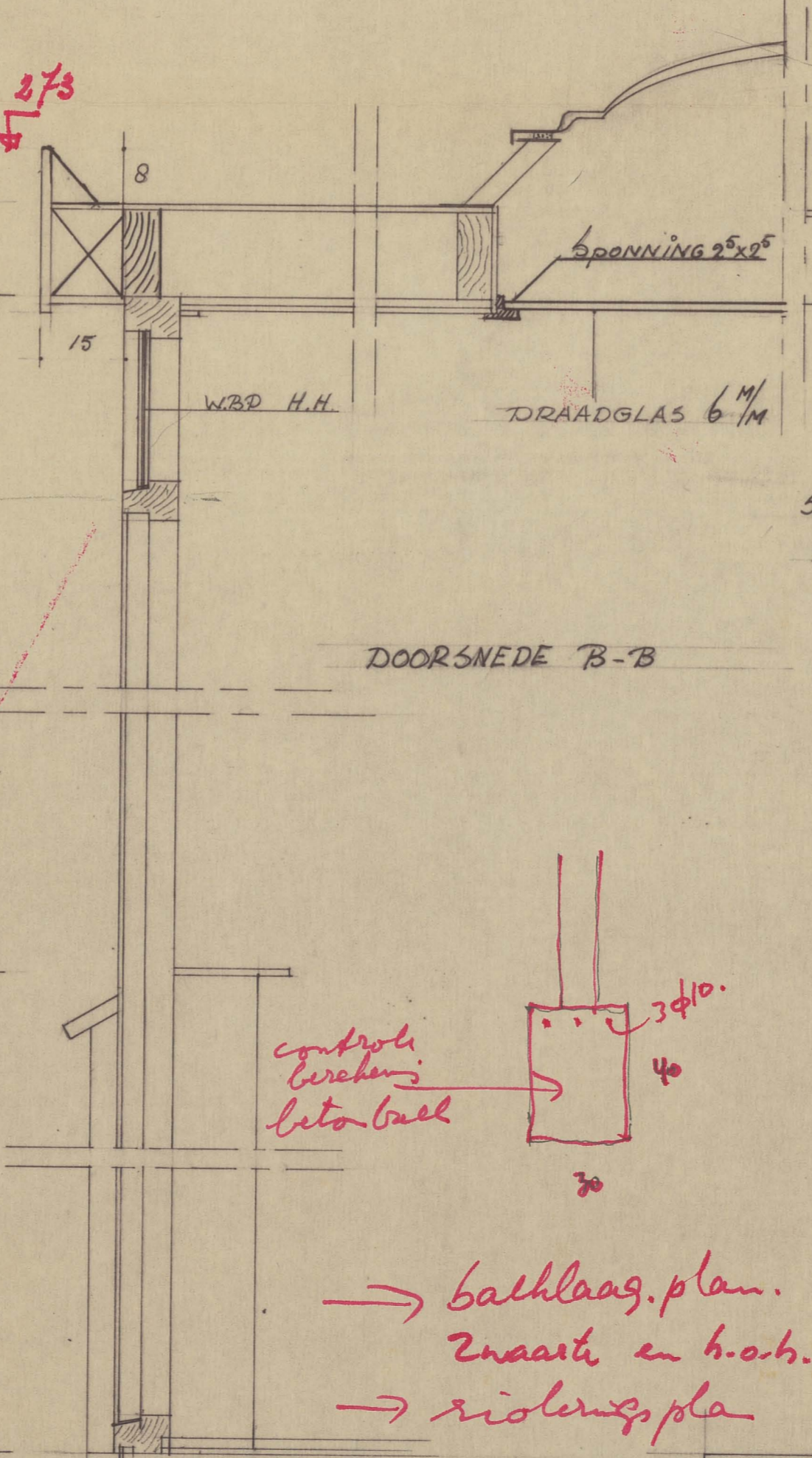
DOORSNEDE A-A



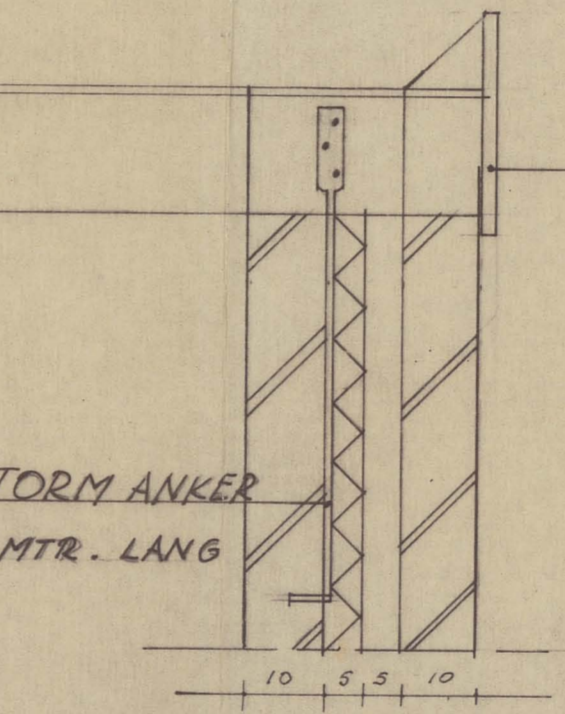
PLATTEGROND BESTAAND.



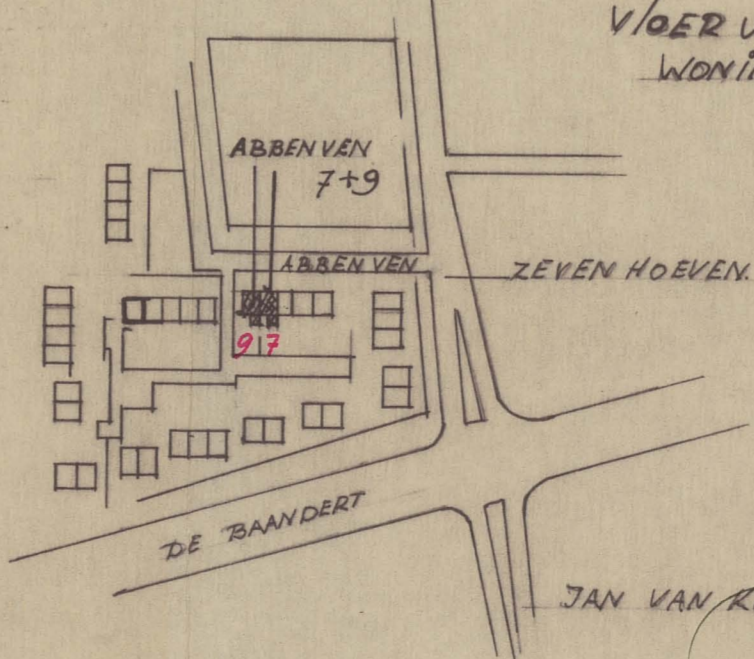
PLATTEGROND GEWIJZIGD



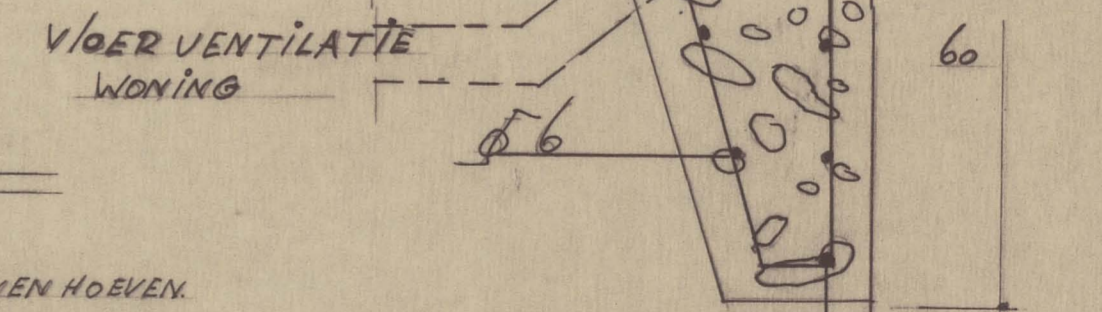
DOORSNEDE B-B



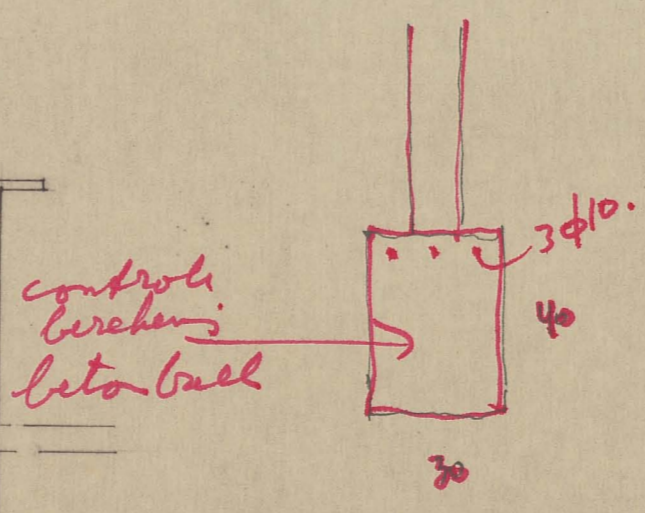
DOORSNEDE 2



SITUATIE 1:2500



DOORSNEDE 3



→ bathlaag plan.  
Zwaarte en h.o.b.  
→ riolingspla

Behoort tot de 5e 1/2  
de Raad  
B. en V. van Heemskerk  
dd. 3 JULI 1984 no. 68  
Rijksland.  
De Sectie Heemskerk  
6-4-84

Archief Bouw- en Woningtoezicht  
Gemeente Heemskerk

UITBREIDEN VAN 2 WONINGEN ABBENVEN 7-9  
T.N.V. DE HEER BG APELDOORN  
SCHAAL 1:100 EN 1:10  
D.D. FEBR. '84