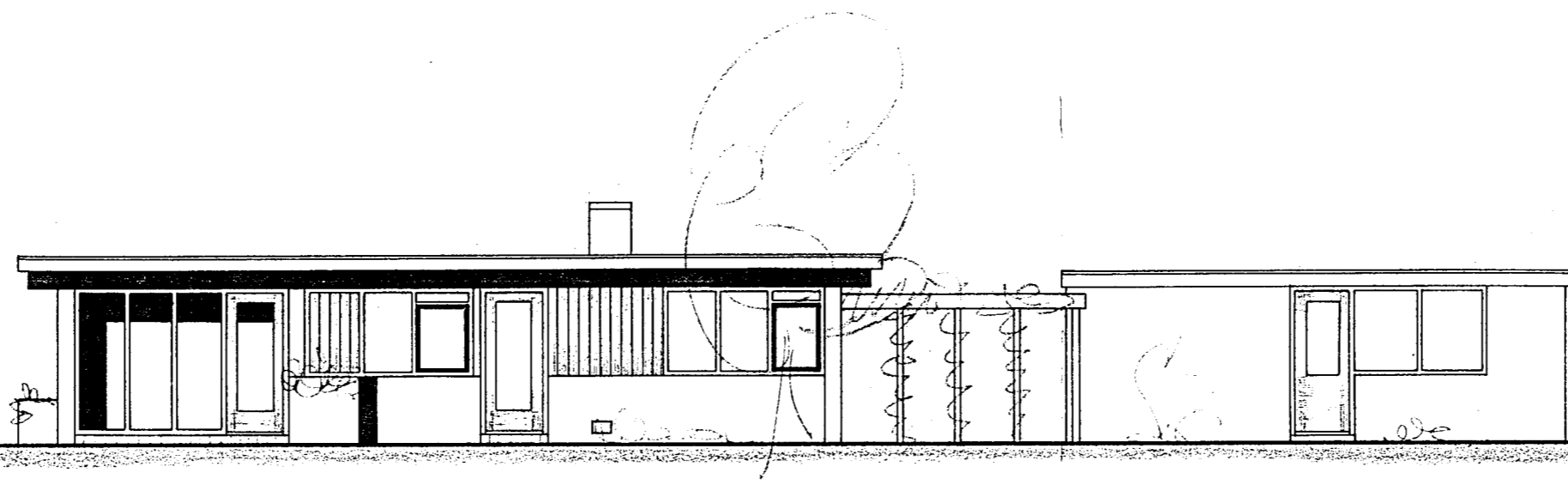
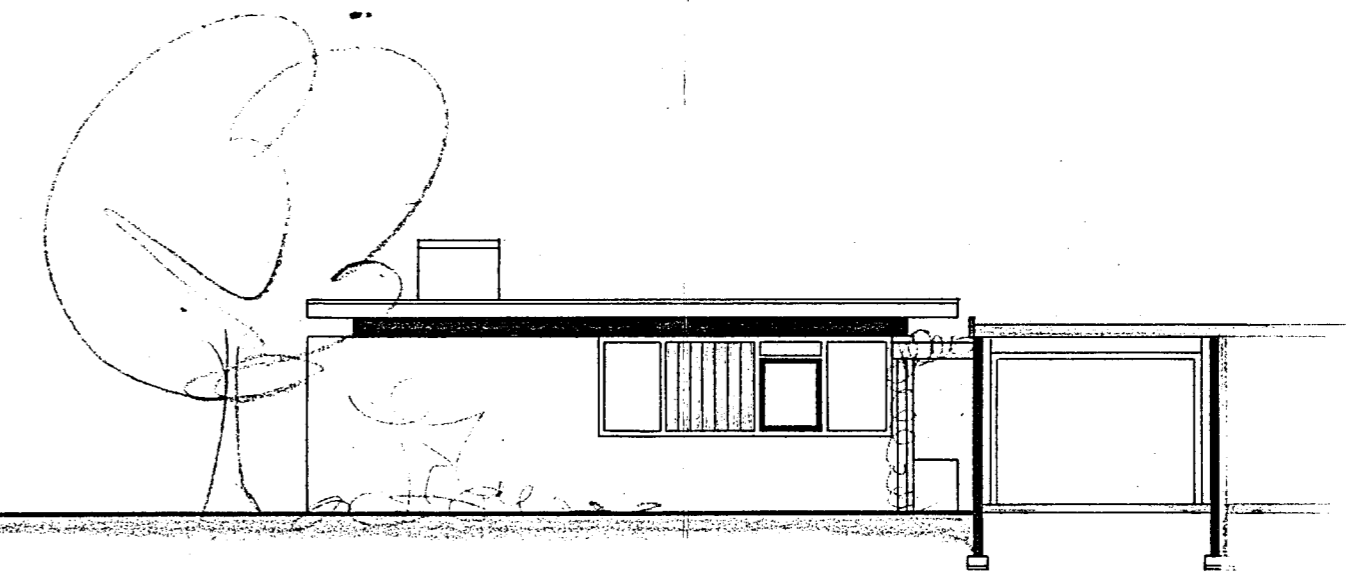


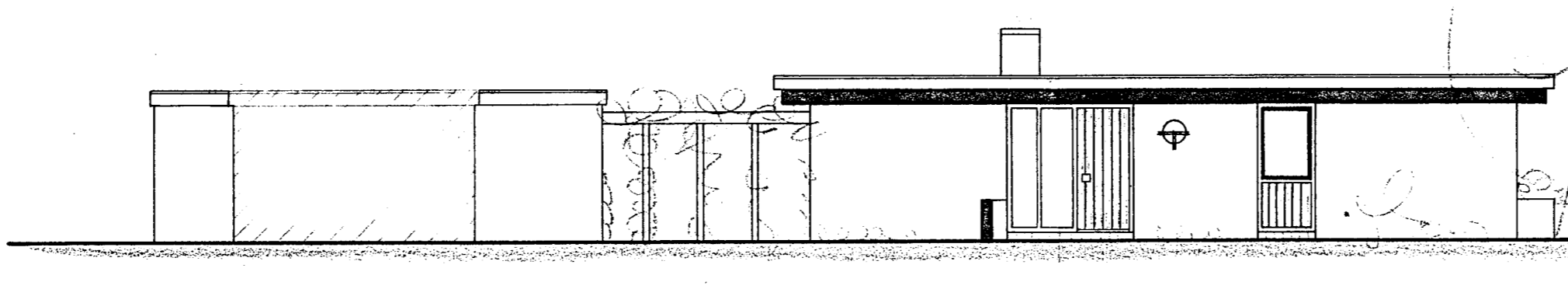
Voorgevel (west)



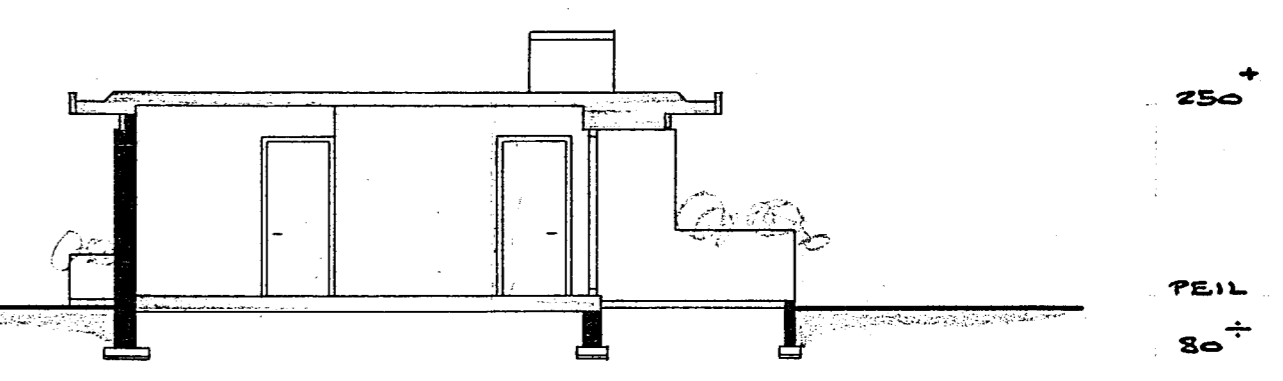
Zijgevel (zuid)



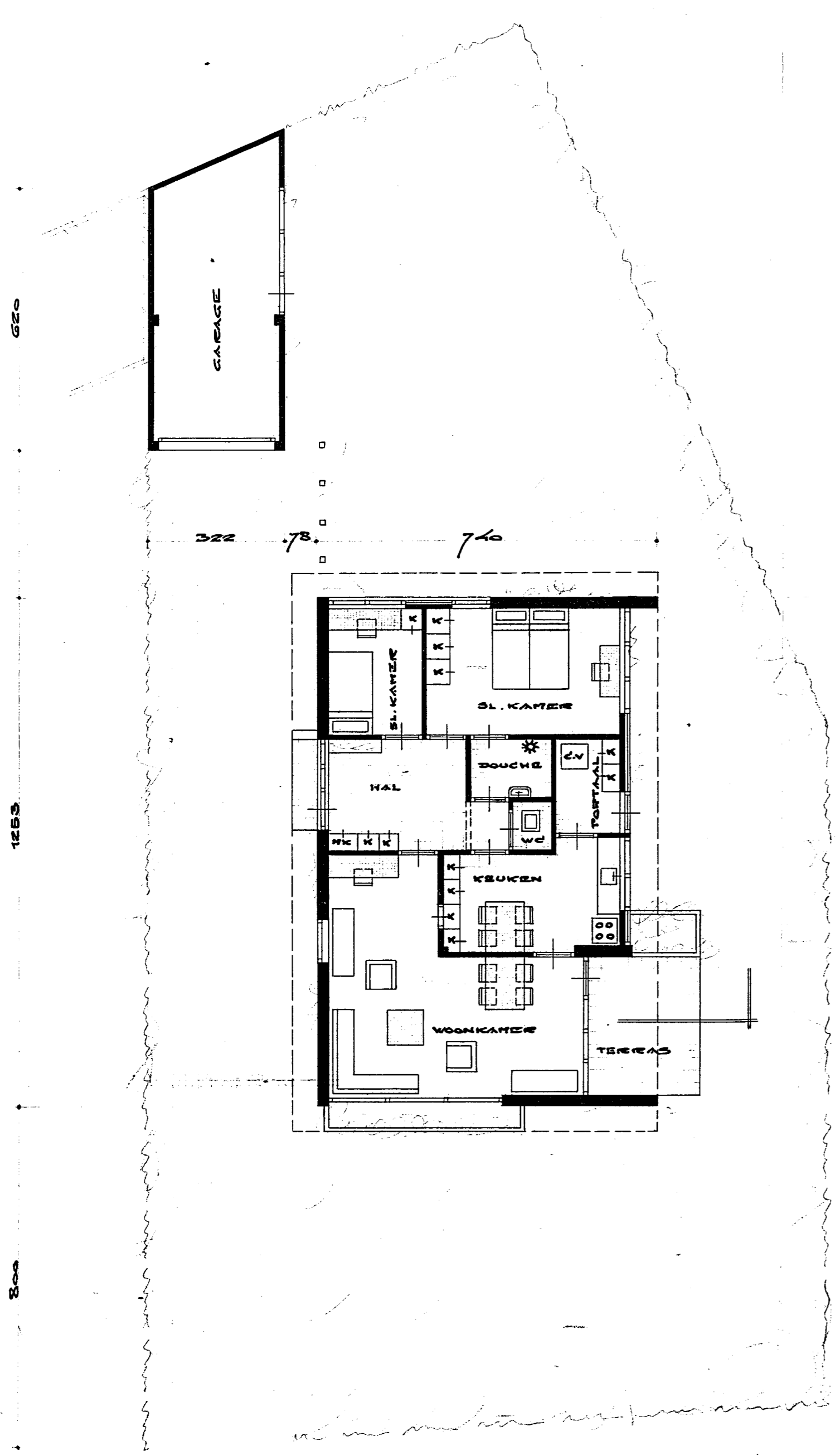
Achtergevel (oost)



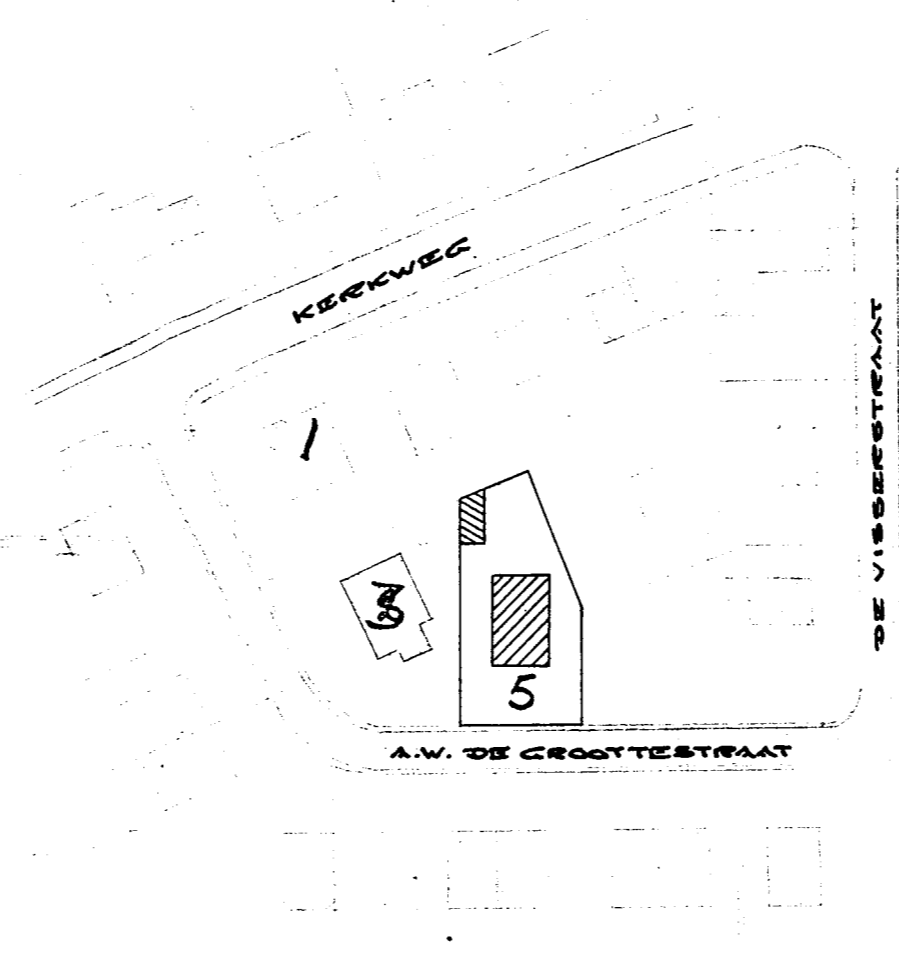
Zijgevel (noord)



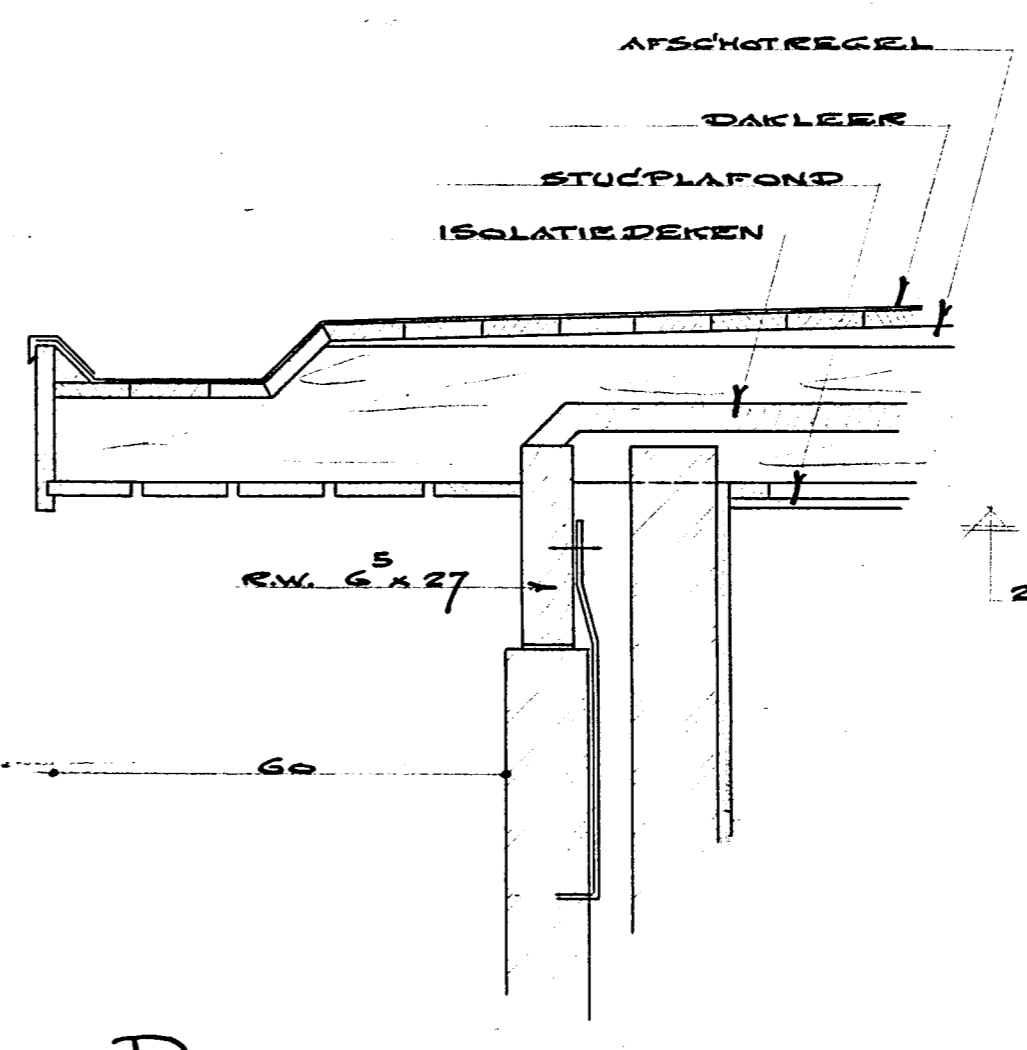
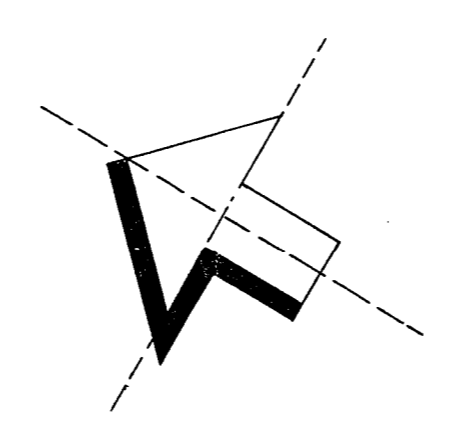
Doorsnede



Plattegrond



Situatie Sectie D n° 4787
Schaal 1:1000



Detail Dakrand
Schaal 1:10

KONSTRUCTIES
 Fundering : beton
 opstaandwerk : metselwerk
 beg. ge. - dak : hout
 kozijnen - ramen - deuren : hout

KLEUREN
 gevels : wit gekleemd
 kozijnen - ramen - betimmeringen -
 dakranden : eedwood, behandeld
 met saddolins teak

voor detailtekening zie tek. n°
 W 6971. 2^o

A. W. Grootshoet

ARCHIEF n° W 6971. 1 B
 GET. FEBRUARI 1970
 GEW. APRIL 1970