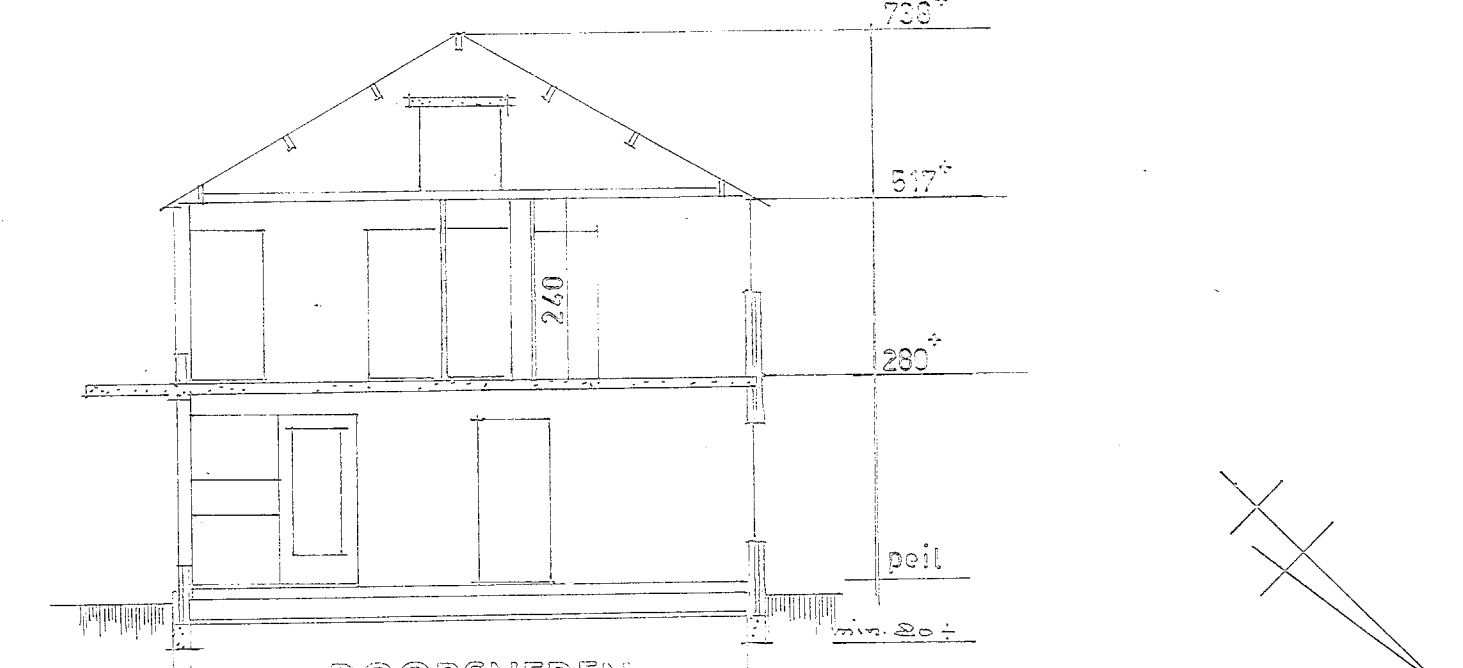
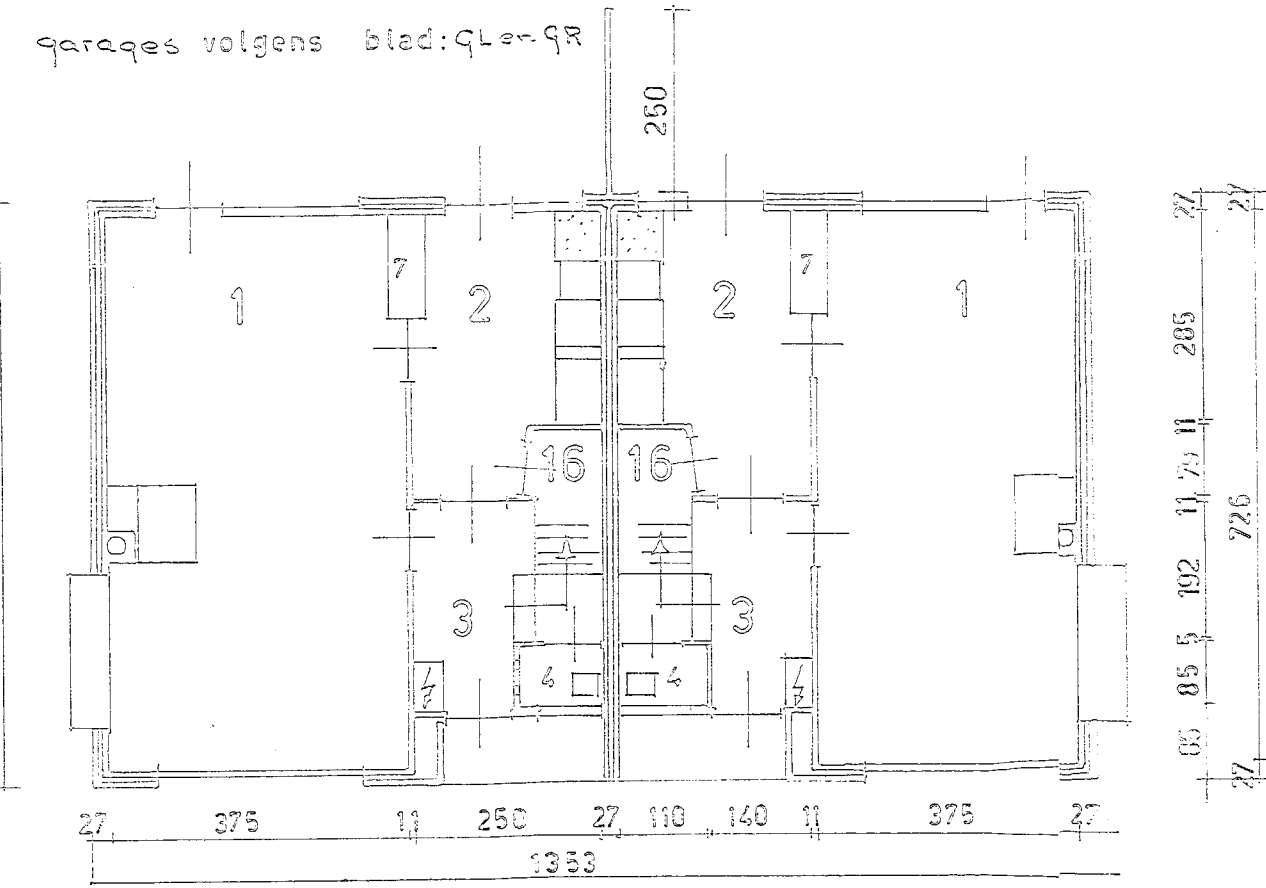


GEVELS

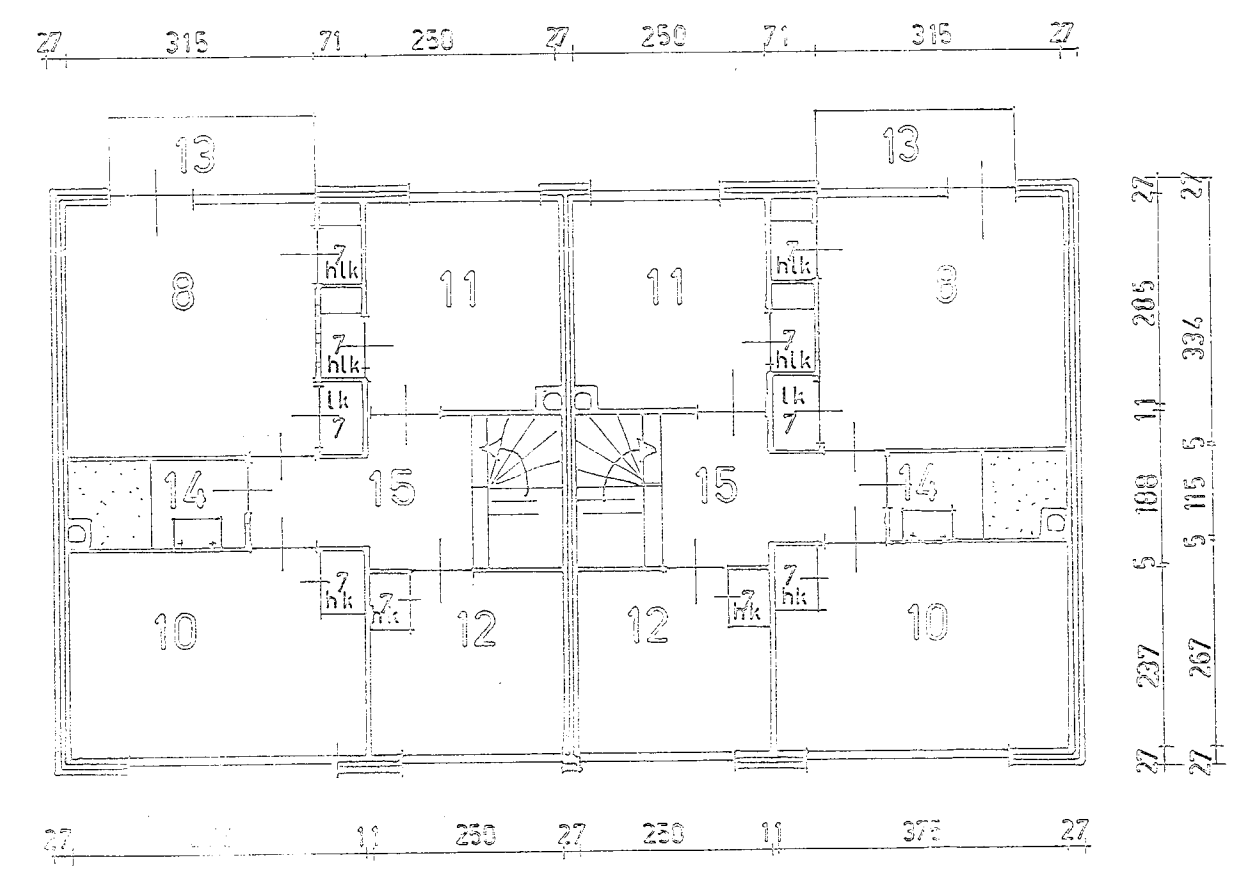


DOORSNEDEN

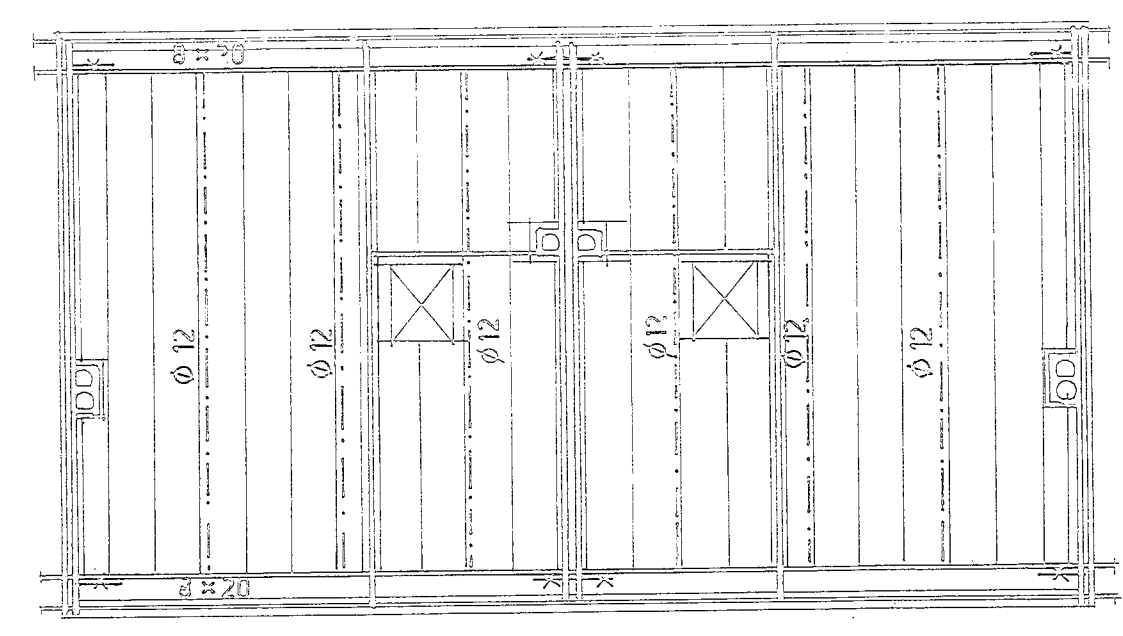
fundering op betonplaten
lang 80 m. zonder spaak
paalbalie tot
volgens tekening berek.



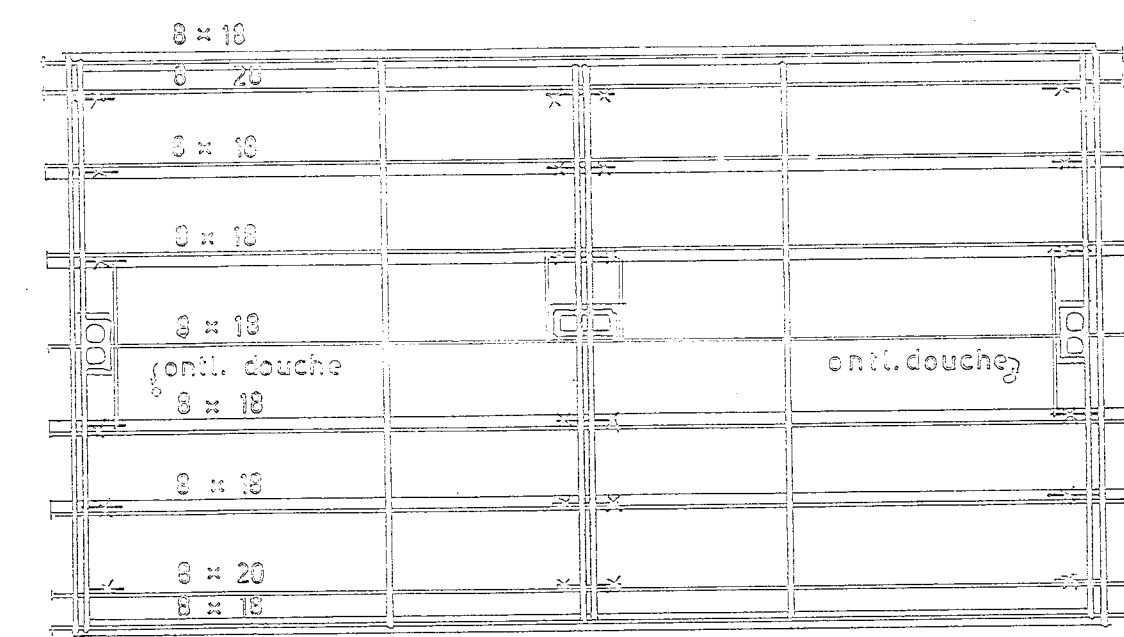
BEGANE GROND



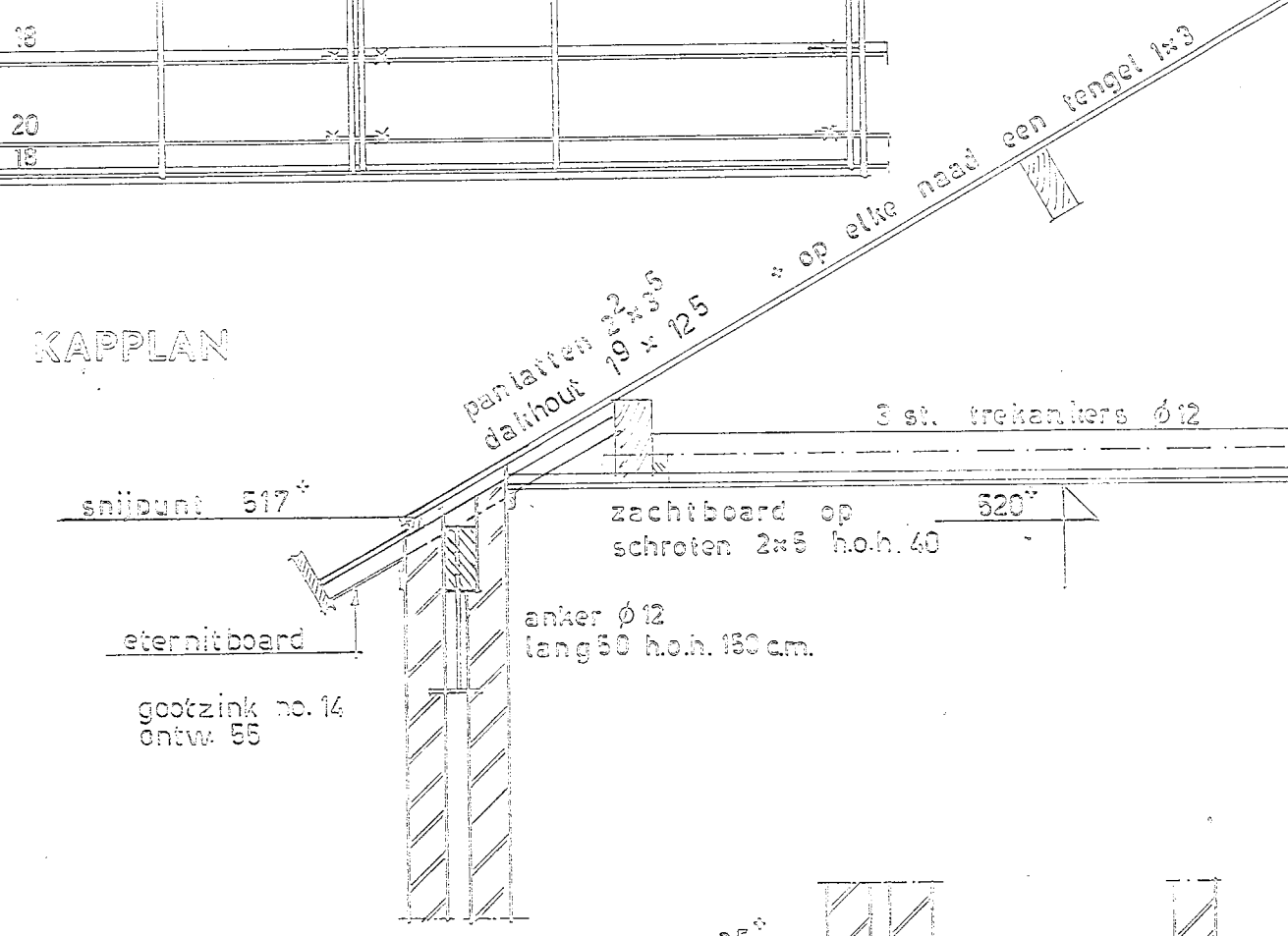
VERDIEPING



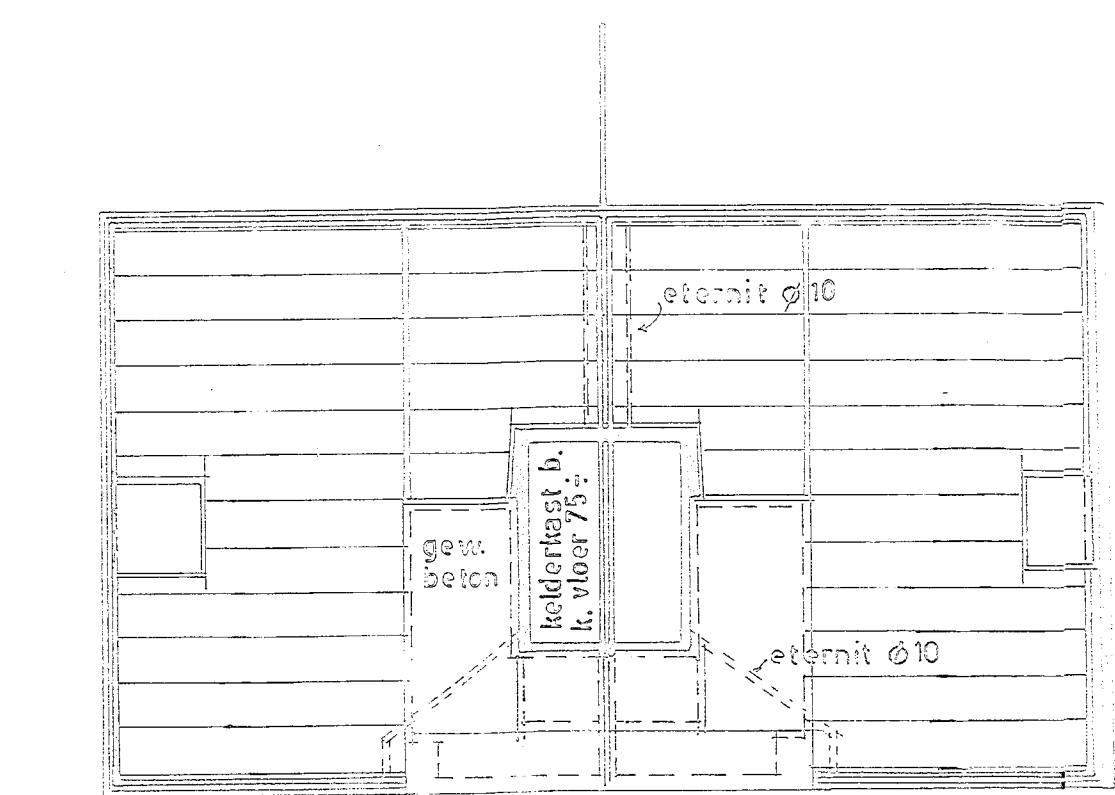
PLAFONDHANGERS 8x10 h.o.h. max. 30 cm.



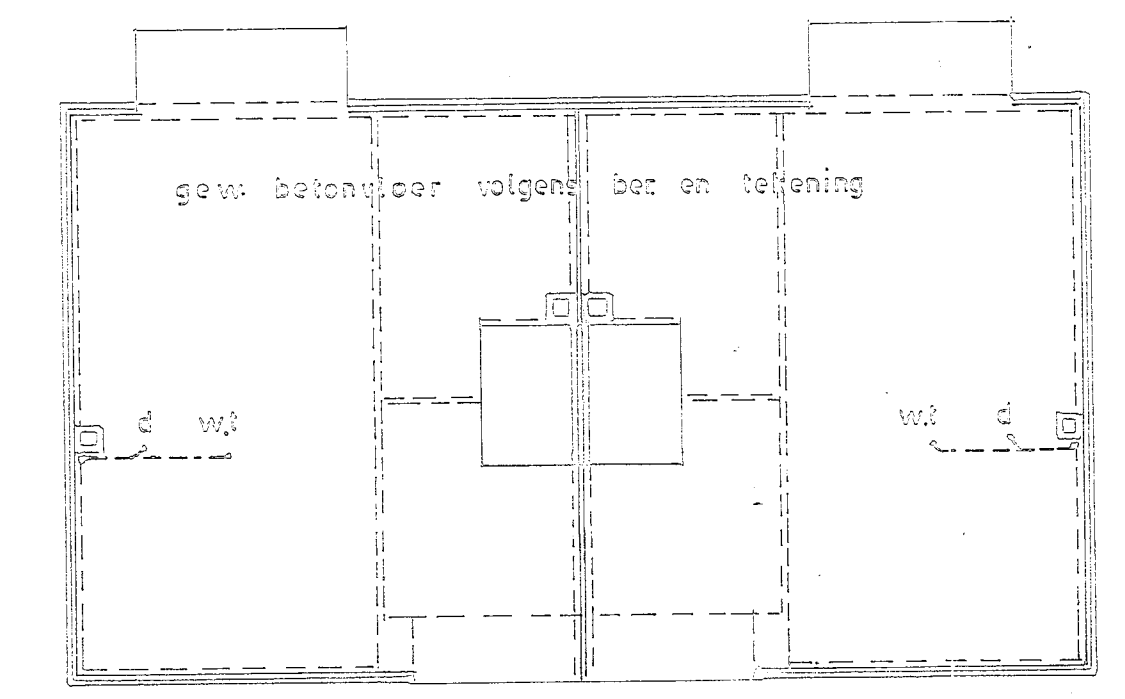
KAPPLAN



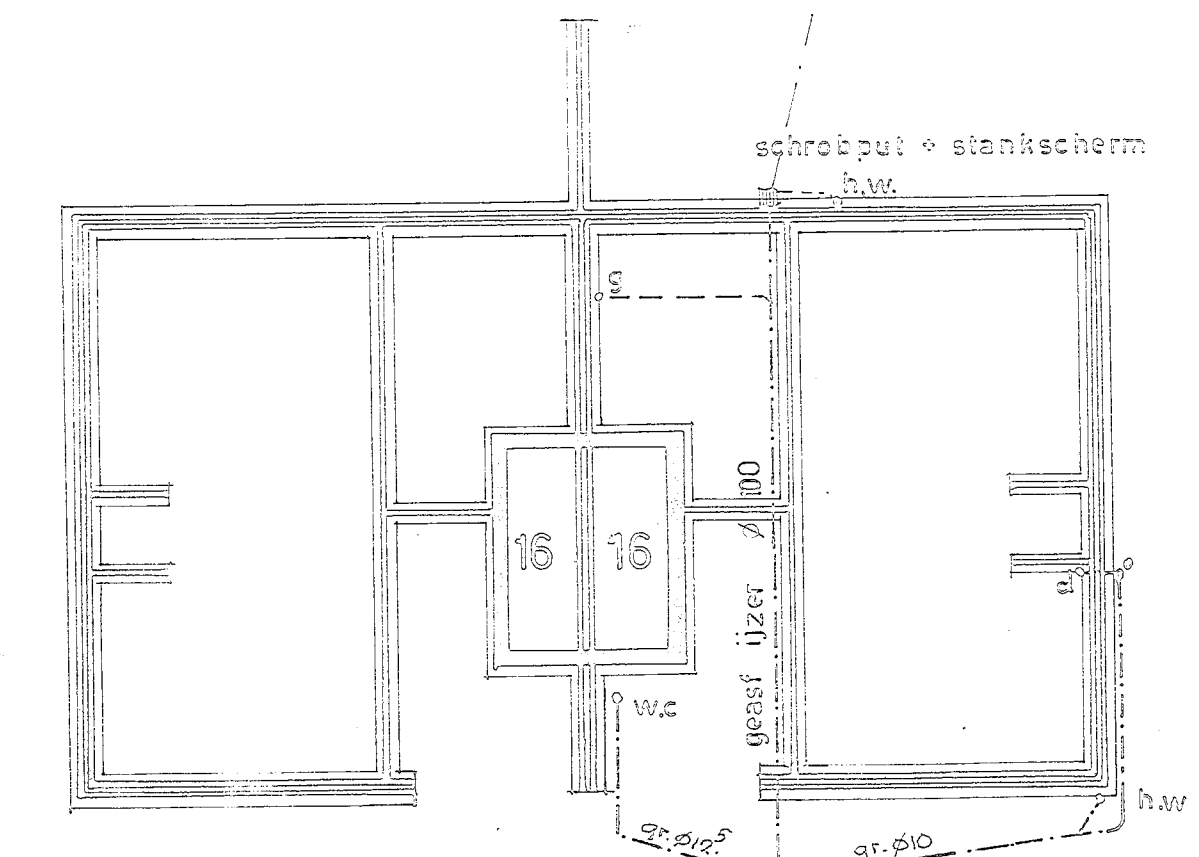
GOOTDETAIL 1:20



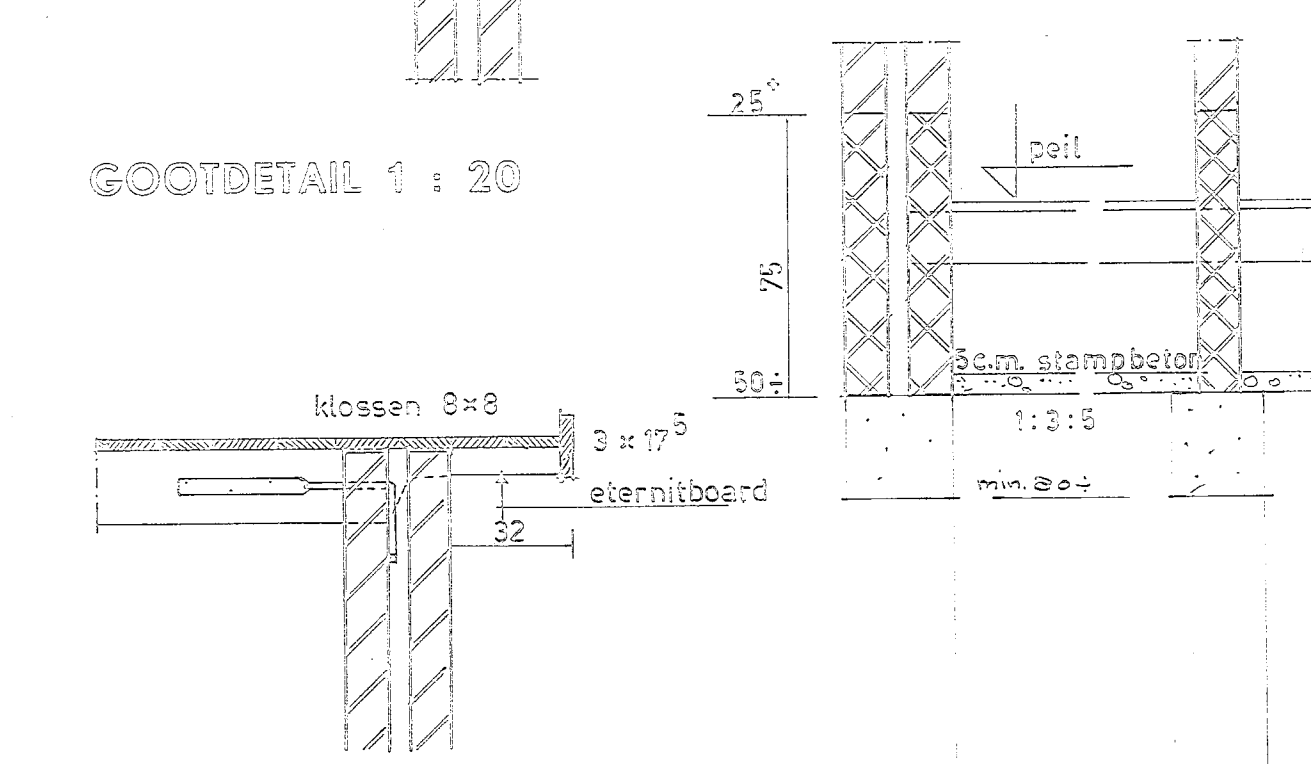
BEGANE GRONDVLOEREN



VERDIEPING VLOER



FUNDERING RIOLERING



KOPGEVELDETAIL 1:20 FUNDERINGSDETALS 1:20

Renvoet:	afmetingen:			licht opp.	vent. opp.
1 kamer	3,75	7,26	2,7	9,6	2,0
2 keuken	2,80	2,88	0,4	0,6	1,0
3 hall	1,37	2,73	0,7	—	—
4 W.C.	0,83	1,10	0,93	0,32	0,22
5 schuur	2,60	3,40	0,82	—	—
6 kolenberging	—	—	—	—	—
7 kasten	—	—	—	—	—
8 slaapkamer	3,18	5,34	1,68	2,0	1,0
9 slaapkamer	3,57	4,75	1,68	—	0,75
10 slaapkamer	3,50	2,95	1,03	—	0,75
11 slaapkamer	2,80	2,48	0,6	—	0,75
12 balken	—	—	—	—	—
13 douche	1,18	2,10	2,5	—	—
14 overloop	—	—	—	—	—
15 tralier	—	—	—	—	—

Umschrijving:	2 personen			
Inhoud:				
woning	6,75	7,80	3,27	382,4 m ³
garage	6,85	3,12	2,38	47,5
trailer	1,40	3,00	0,75	3,1
				387 m ³

Benodigde kozijnen:		12 JAN												
Mark:	A40e	A41e	C34m	C34m ^s	N10e	N10e ^s	N21p	N21p ^s	O15e	P13e	F13e ^s	S13e	S13e ^s	S13i
Aantal:	2	2	1	1	1	1	1	1	2	1	1	1	1	1
Mark:	S13i ^s	S19k	S19 ^s	S23p	S23 ^s	30	42			1	2	4	5	11
Aantal:	1	1	1	1	1	2	2			5	2	1	2	8

WERK: C. B. Dutry v. Haafken en W. J. v. Leeuwen te Hazemakker

BATEL bestektekning

ARCHITECTENDUREAU F. KLEIN, GRONINGER
 Getekend A.T. 5.12.1933
 Werk No. 7572
 Schaal: 1:100
 Afd. 10/100
 Werk No. 10 (100)
 Grootte