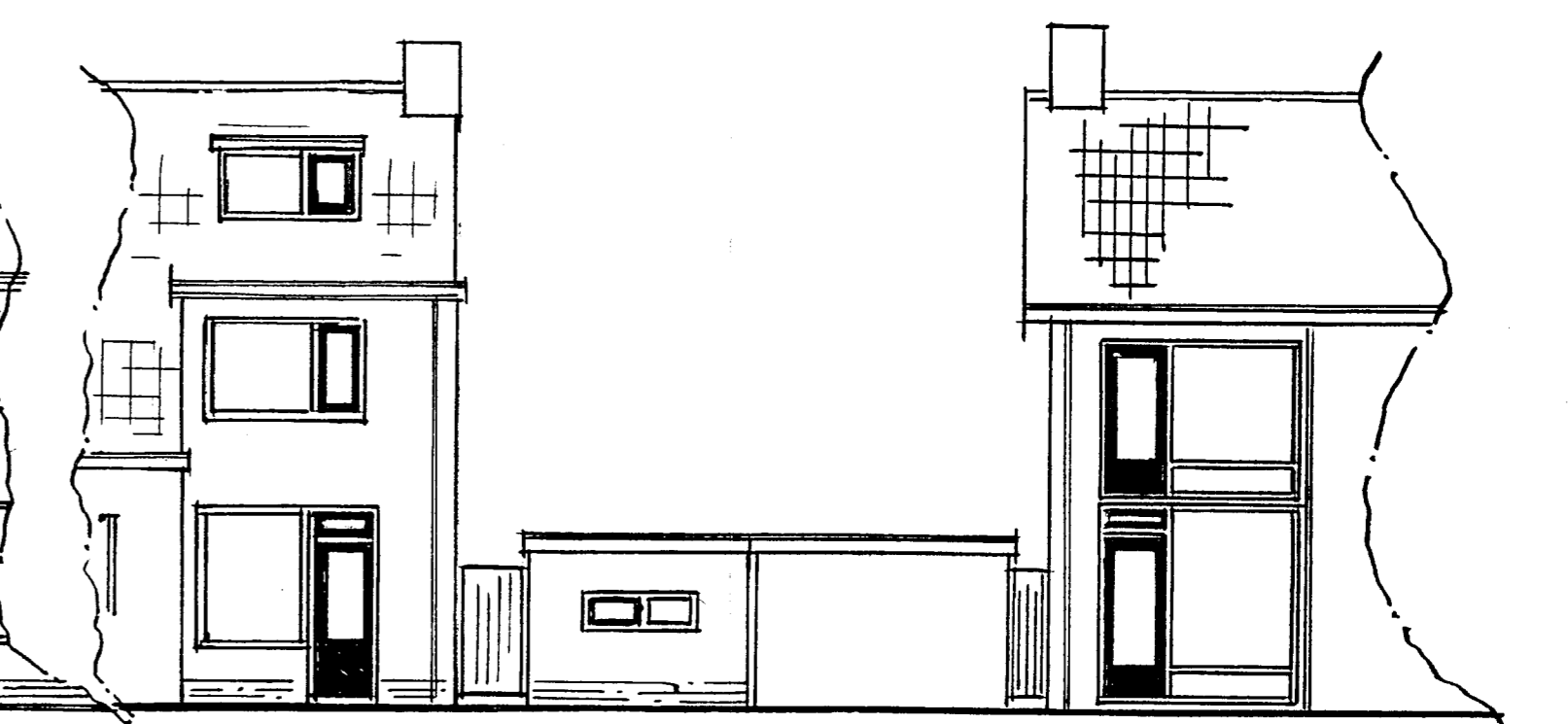


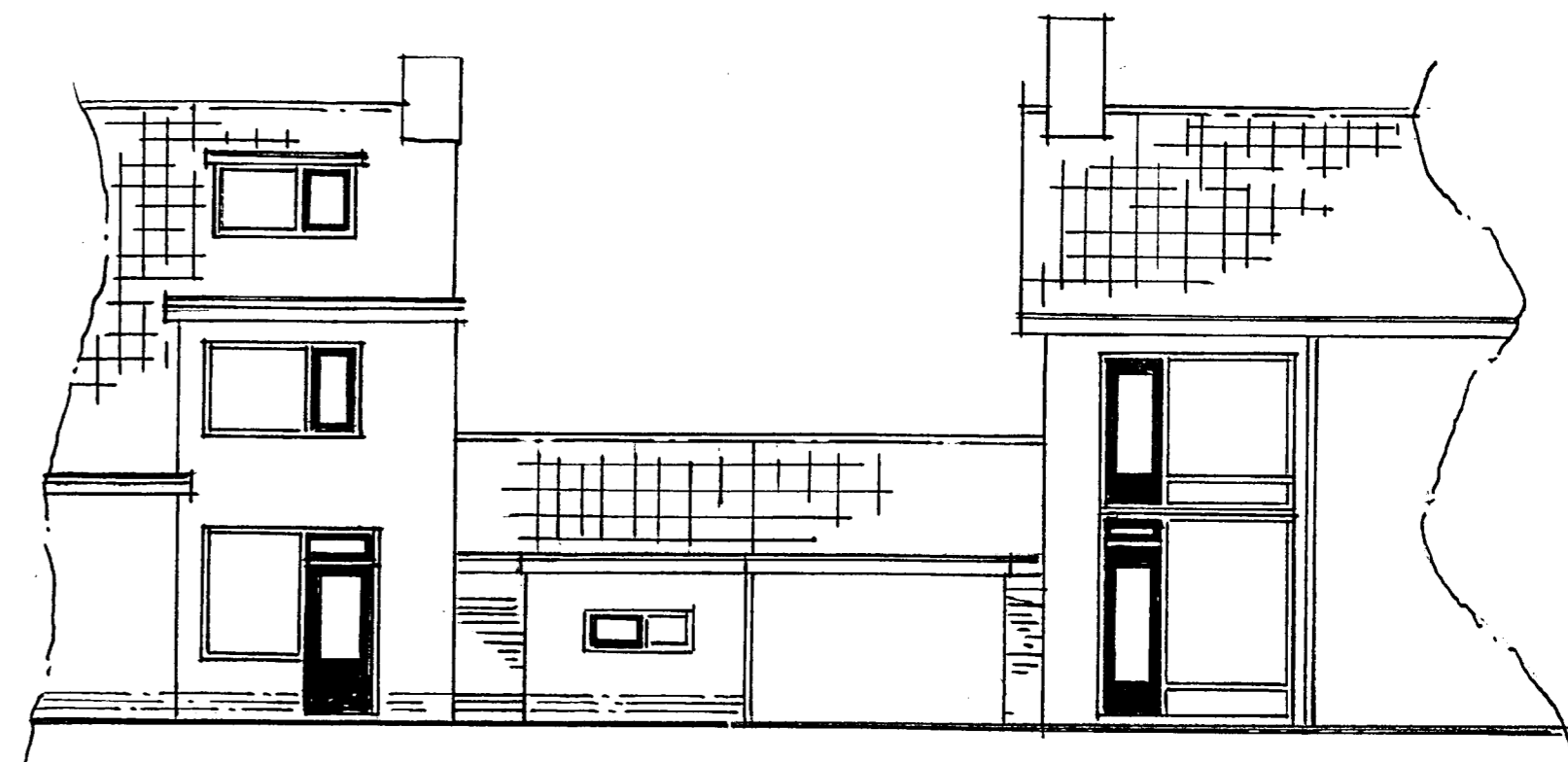
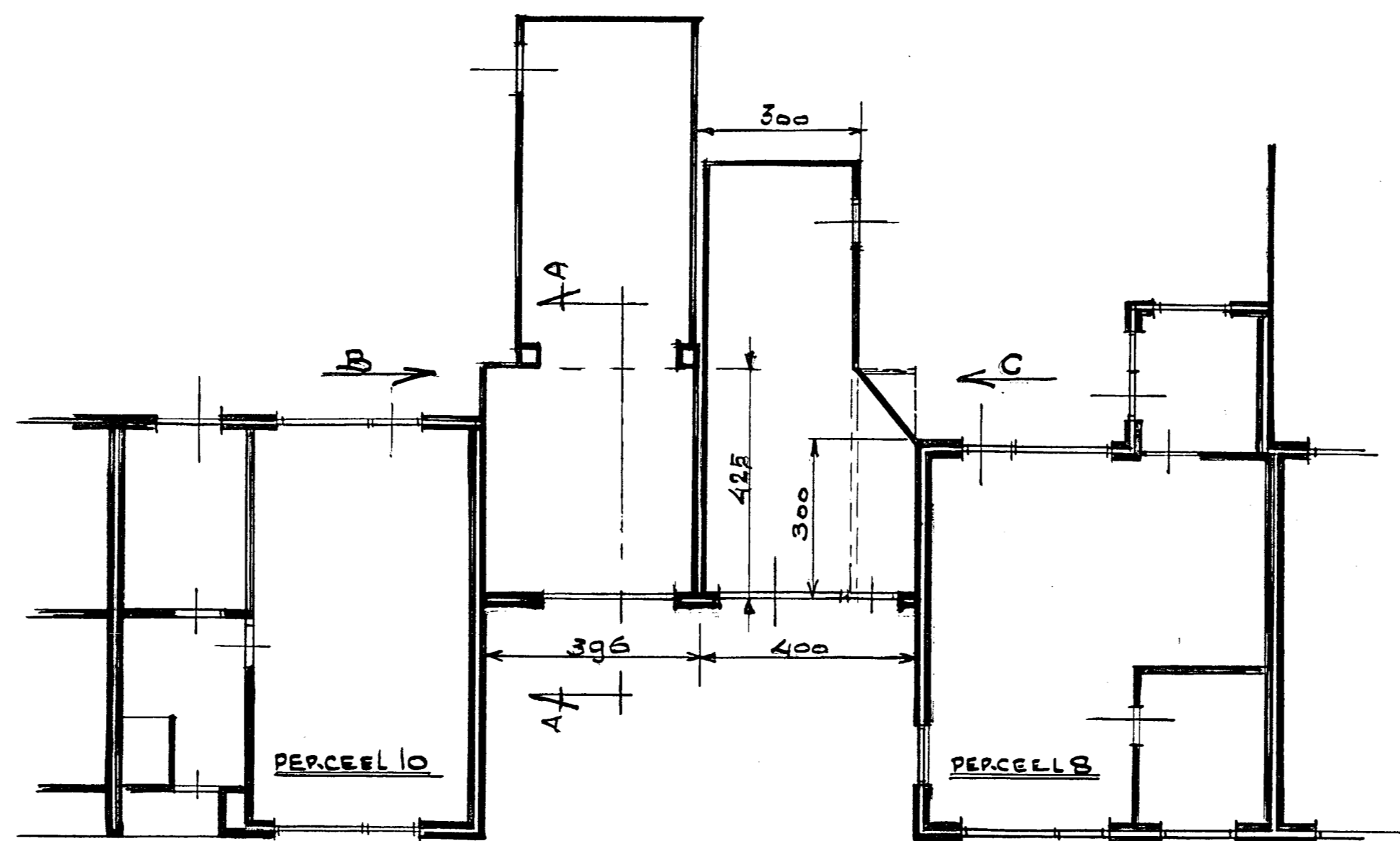
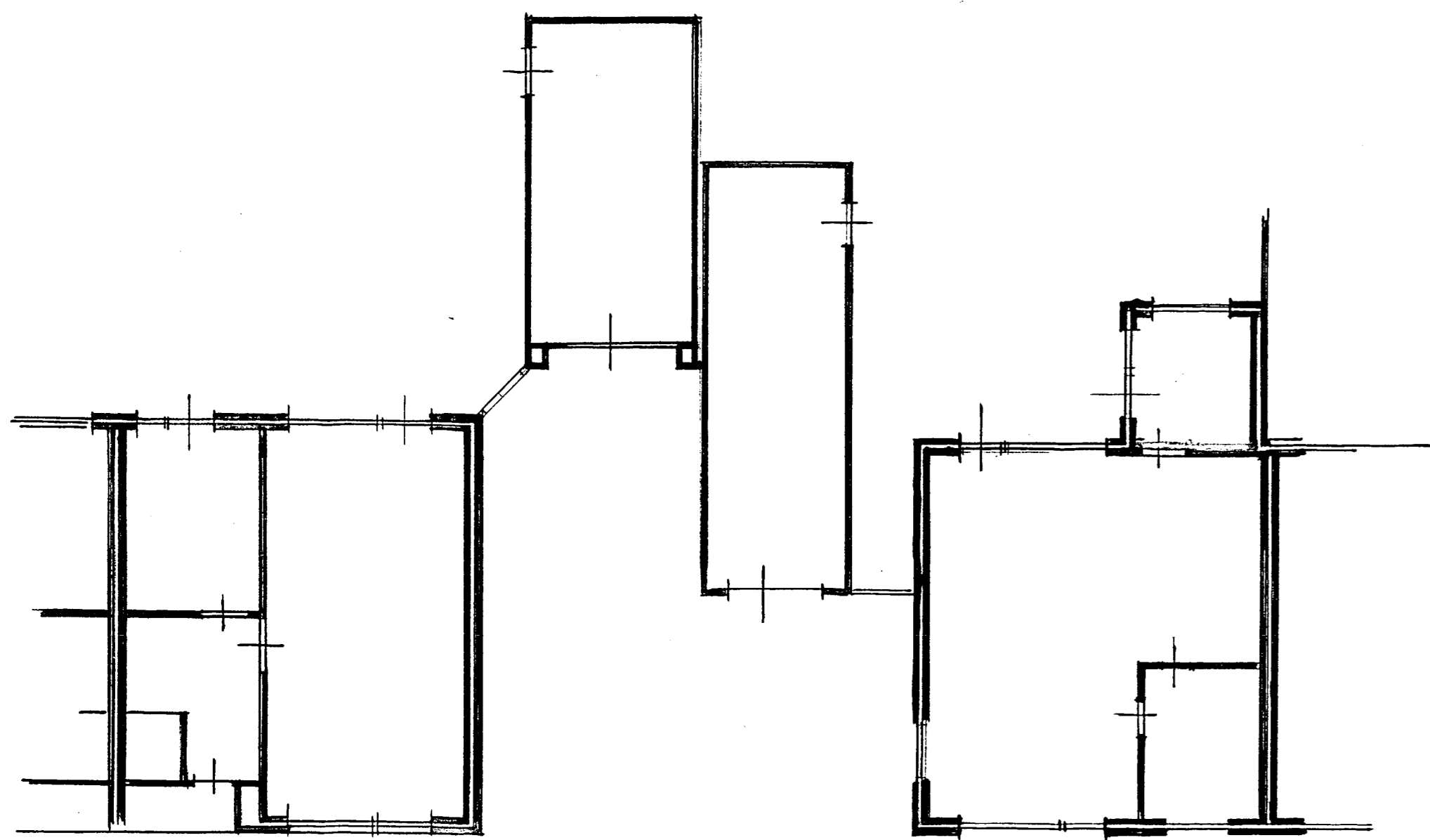
bestaand vooraanzicht



nieuw vooraanzicht



bestaand achter aanzicht

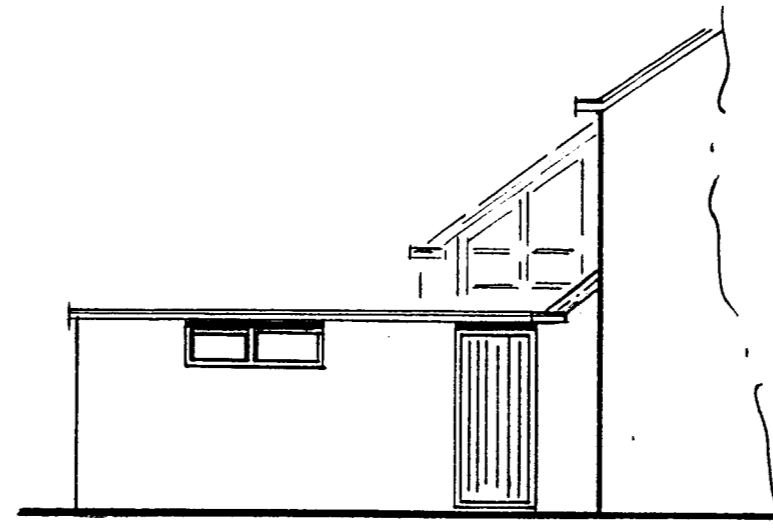
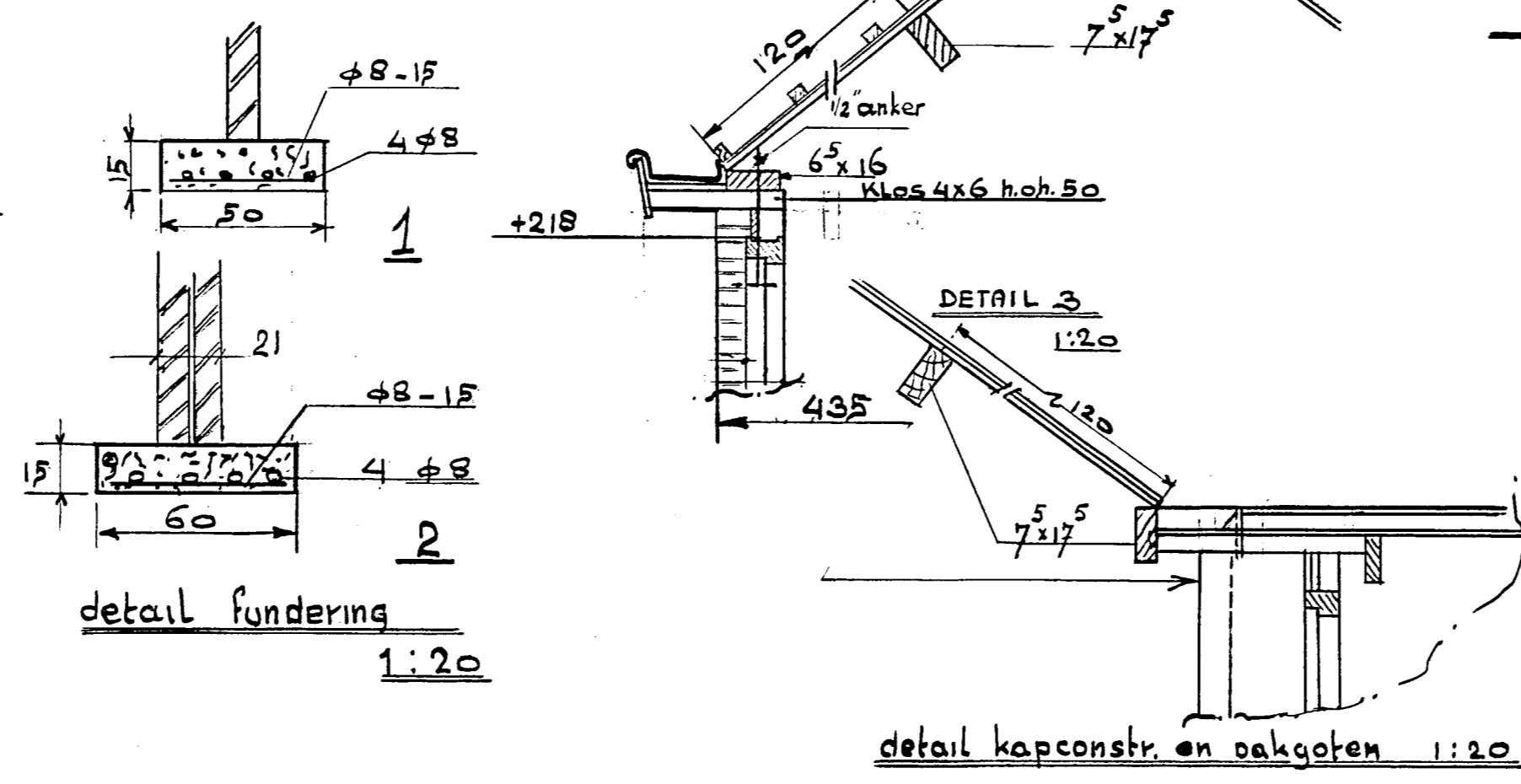
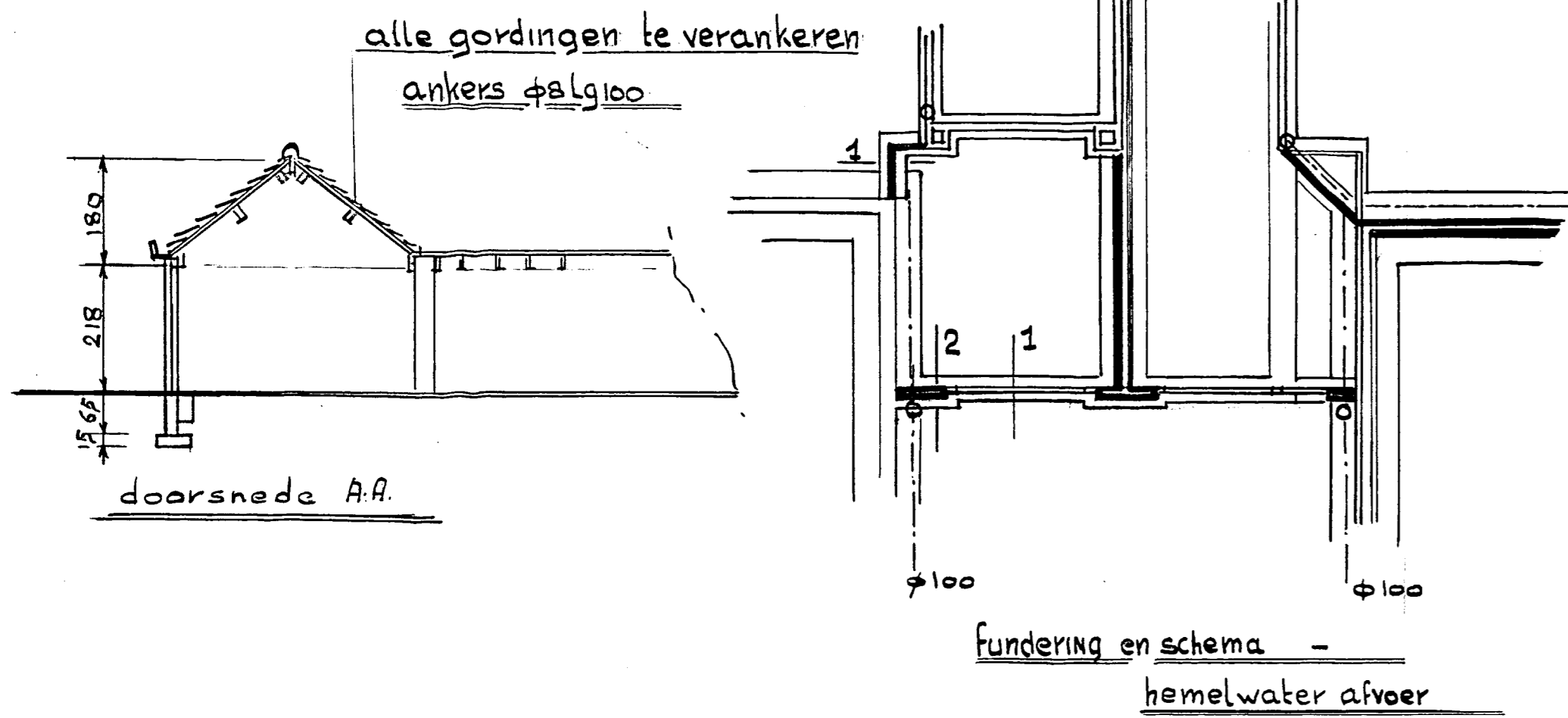


nieuw achter aanzicht

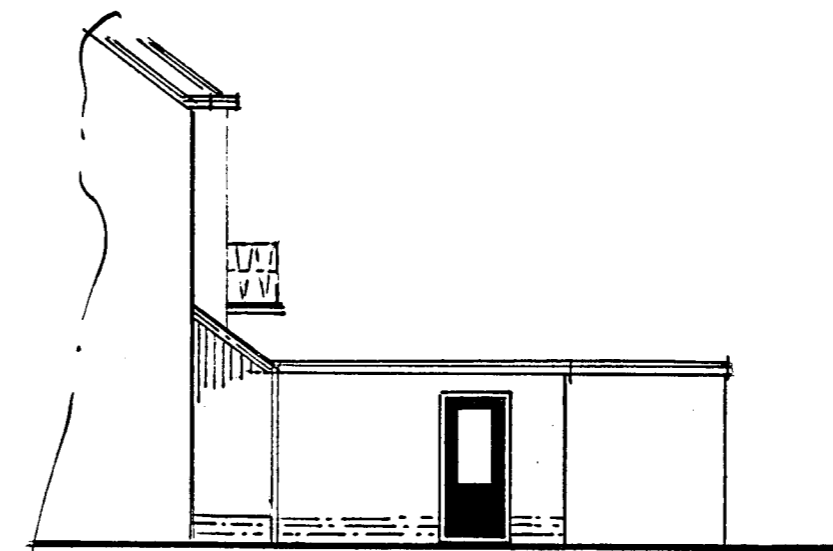
De Staat is eigenaar van  
het perceel van Heemskerk  
nr. 6 juni 1928 no. 96A  
107 t. 108  
De Secretaris van Heemskerk.

bestaande plattegrond

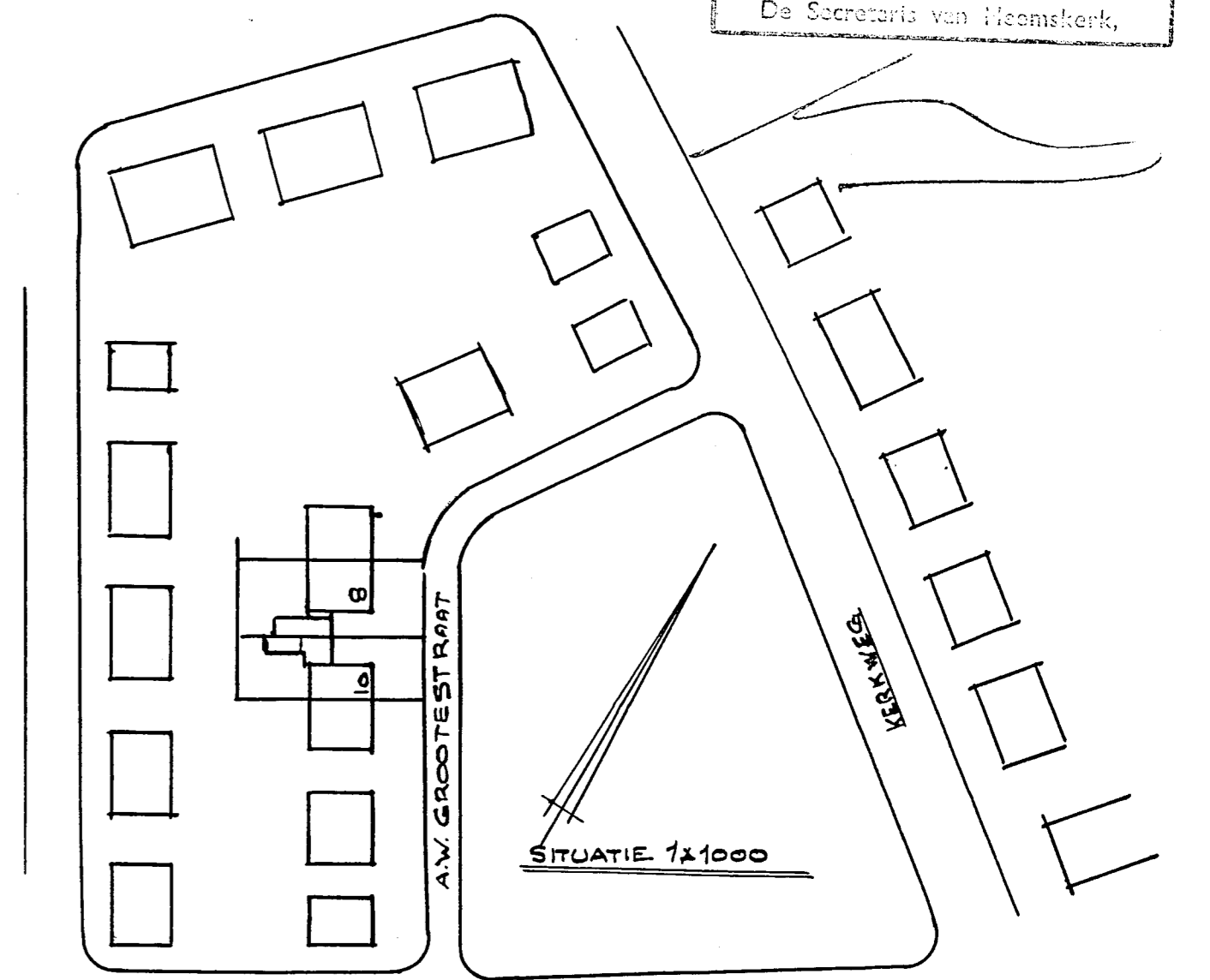
nieuwe plattegrond



aanzicht B



aanzicht C



STUATIE 1:1000

BOUWPLAN WUZZING GARAGES  
PERCELEN A.W. GROOTESTRA. 8 EN 10  
**HEEMSKERK**  
SCHAAL 1:100