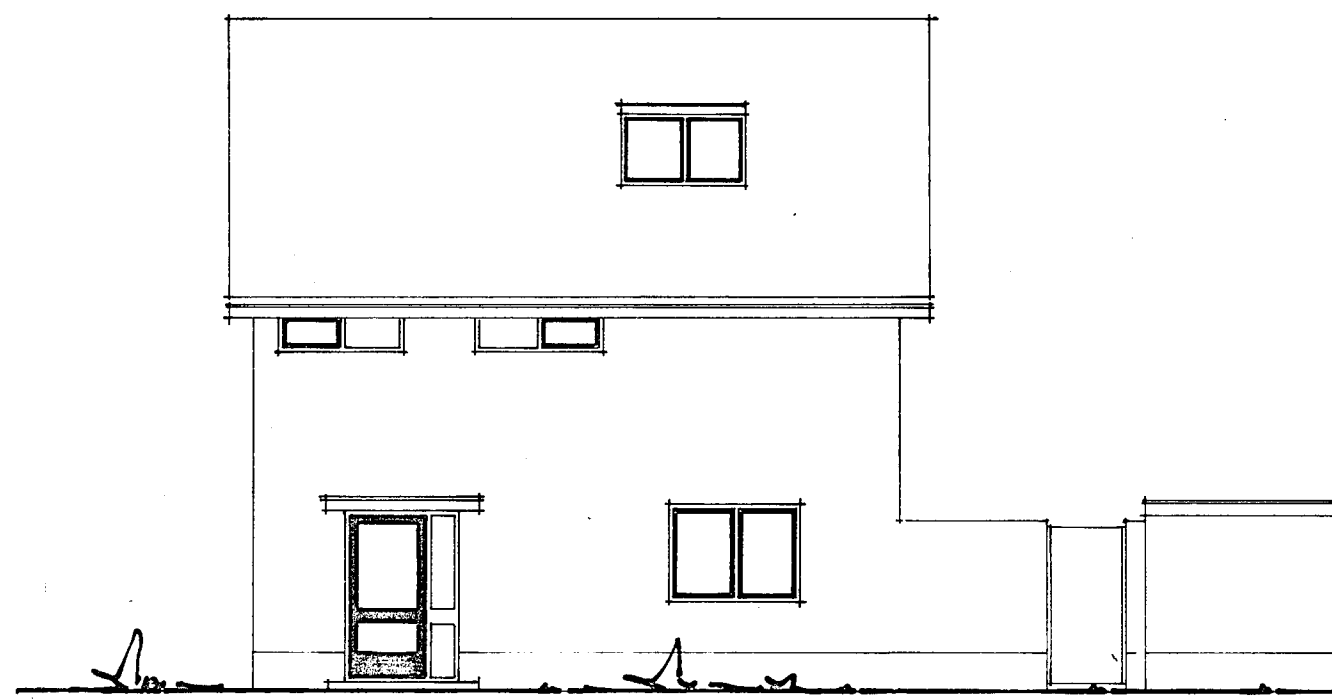
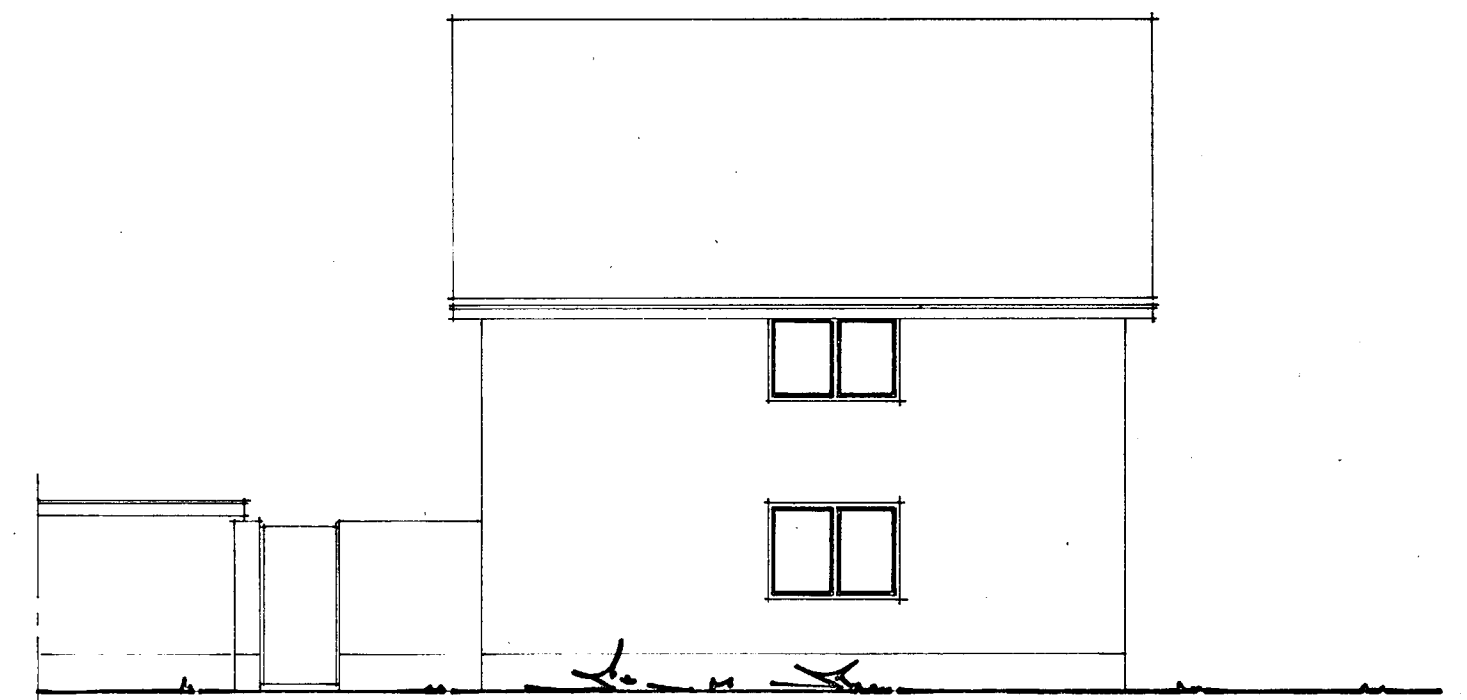




BESTAANDE ACHTERGEVEL



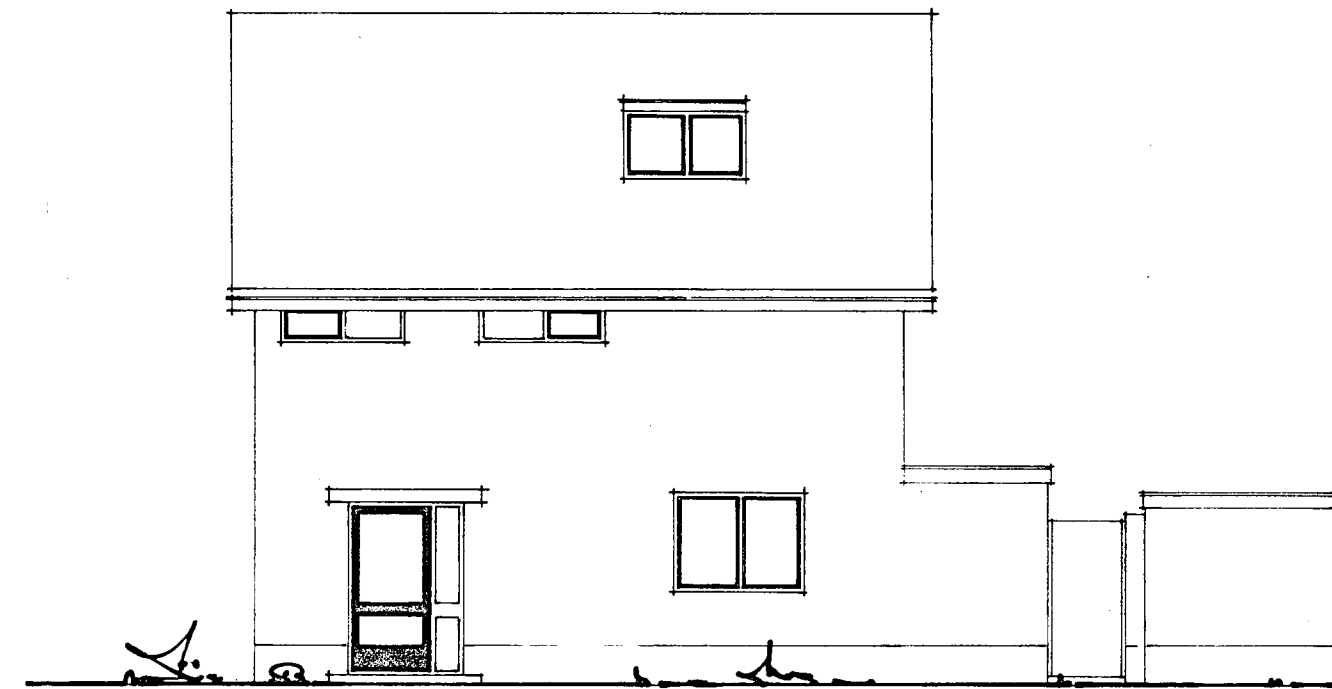
RECHTER ZUGEVEL



LINKER ZUGEVEL



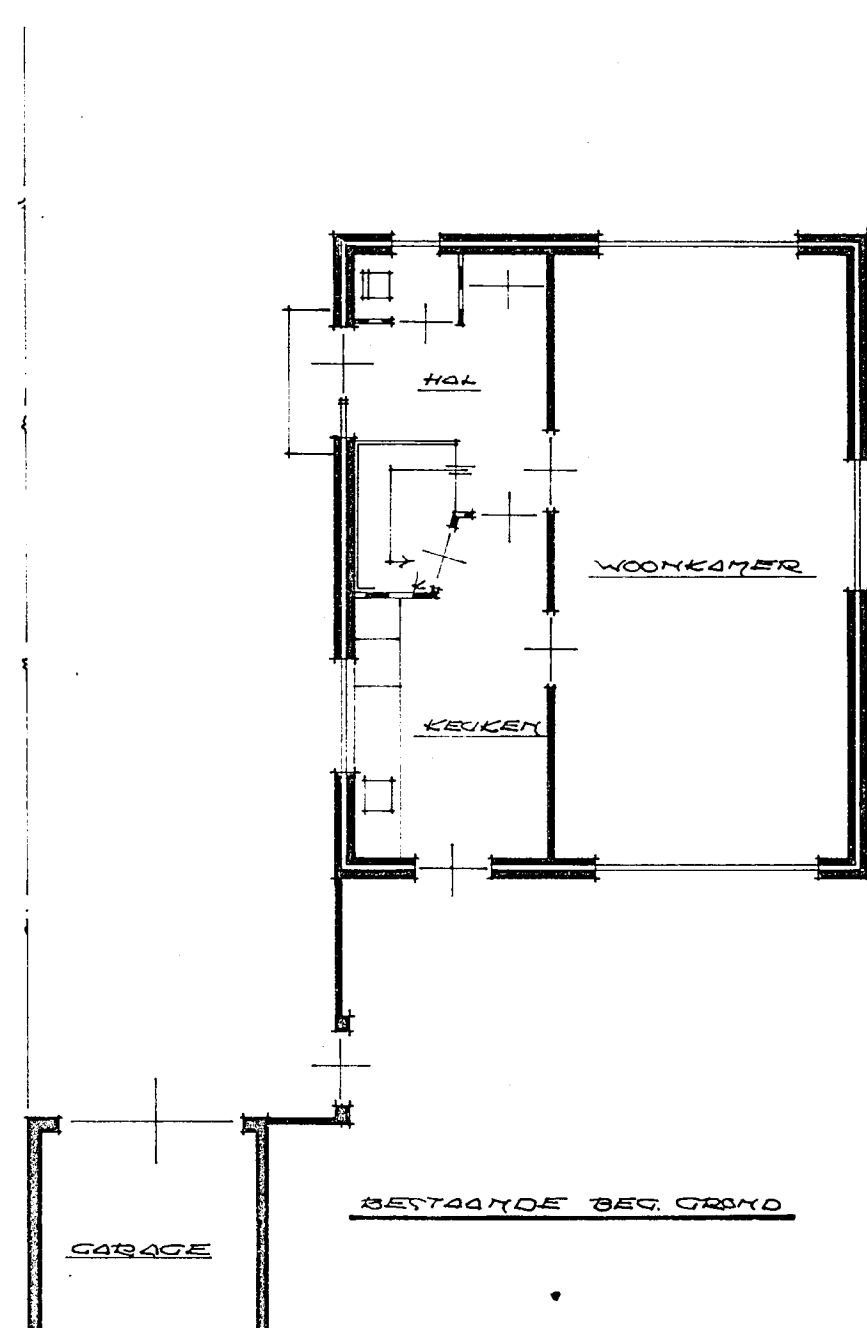
GEWUZIGOE ACHTERGEVEL



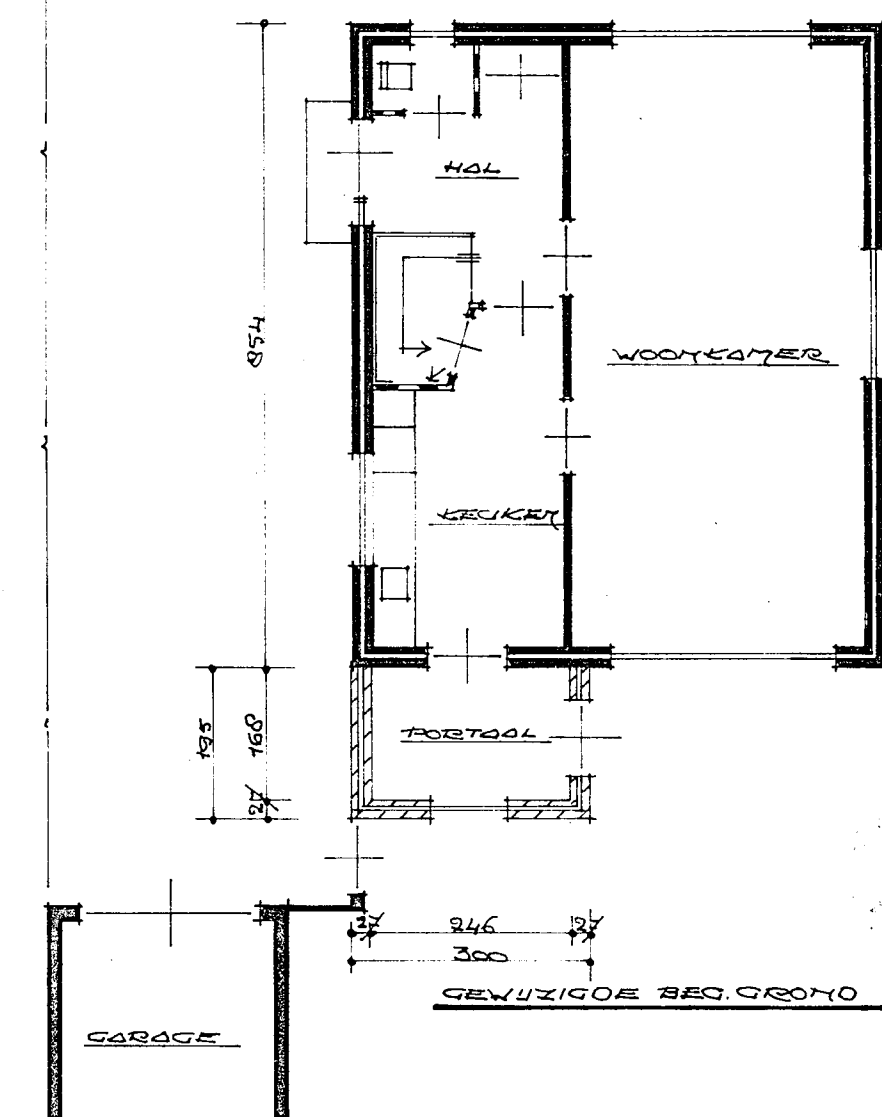
RECHTER ZUGEVEL



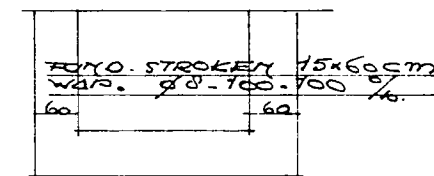
LINKER ZUGEVEL



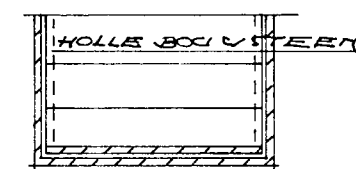
BESTAANDE BES. GROND



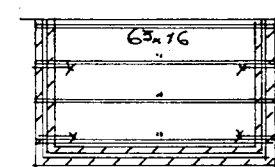
GEWUZIGOE BES. GROND



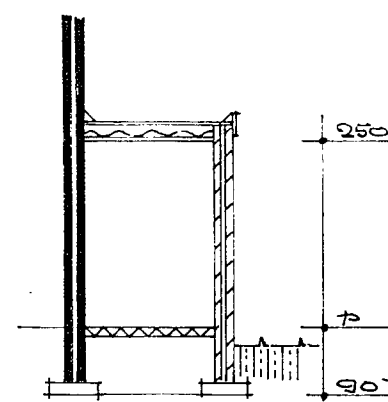
WONDERING



VLOER

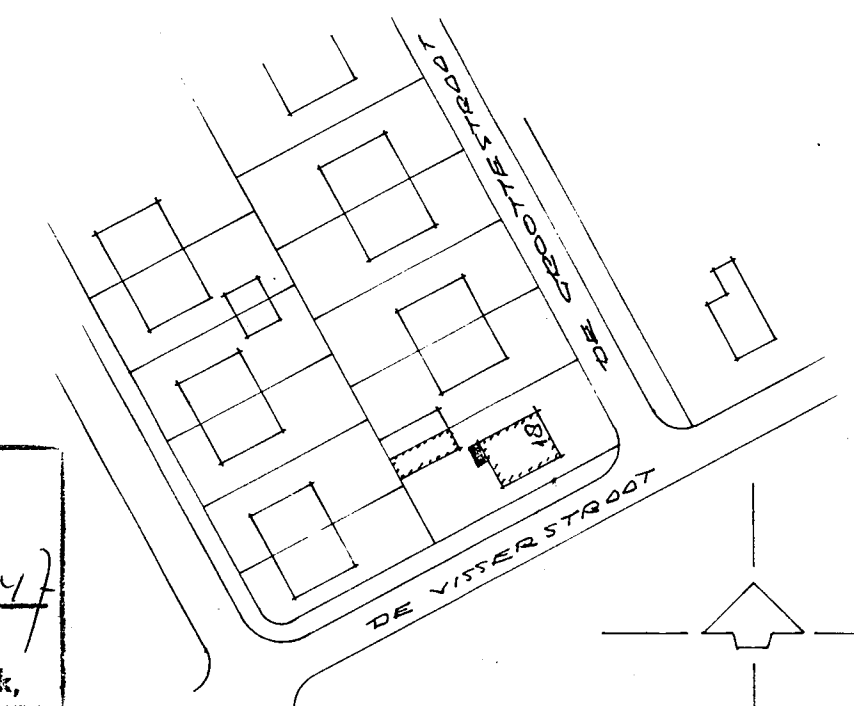


200



DOORSTREEDE

Behoort bij besluit van
de Raad van Heemskerk
B. en W. - 3 AUG. 1976 no. 147
Mij bekend.
De Secretaris van Heemskerk,



KAD. SITUATIE SEKTIE D 4463 GED. 1400

OPGEKOMEN 6 JUNI 1976

BOUW TOCHTPORTAALTJE DAN ACHTERGEVEL WOKING A.W. DE GROOTTESTRAAT 19 TE HEEMSKERK	
ORDERVEER: PLOTTETBOND - GEVELAARZICHTEN	SCHOOL 10 100 GET. MEI 1975
OPDRACHTGEVER: DE HEEB C. MOLENAAR A.W. DE GROOTTESTRAAT 19 HEEMSKERK	OPDRACHT NR. 7609.
SAKE TOEDERKRIS ARCHITECT N.O.V. 'KWIERTENLAND 4/2 TE LITTEK	BLAD 70