

Controle van vloerwapening

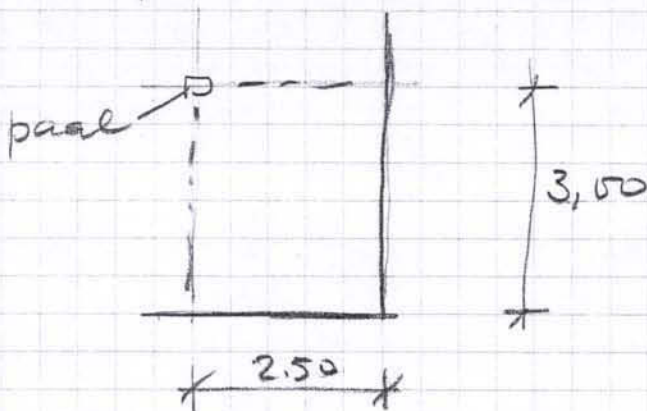
zie a. volgens TGB 1990

$$p_{gruy\ max} = 24.00 \text{ kN/m}^2$$

$$p_d\ max = 1.35 \times 24.00 = 32.40 \text{ kN/m}^2$$

bepaling $M_d\ max$

bepalend veld $2500 \times 3000 \text{ m}$



Zie TGB 1990 8.2 : gewal IV-5

$$l_y/l_x = 1.2$$

boven paal:

$$M_d\ max = 0.252 \times 32.40 \times 2.50^2 = 51.00 \text{ kNm}$$

$$d = 250 - 35 = 215$$

$$A = 568 \text{ mm}^2$$

aan wezij $\bar{\varnothing} 10-150 + 2\bar{\varnothing} 12 (= 750 \text{ mm}^2)$

Onder:

$$M_d\ max = 0.105 \times 32.40 \times 2.50^2 = 21.26 \text{ kNm}$$

$$d = 210 \text{ mm}$$

$$A = A_{\min} = 300 \text{ mm}^2$$

aan wezij $\bar{\varnothing} 10-150 (= 527 \text{ mm}^2)$

werk:

werknr:

par.

datum

wijz.